

Product datasheet for **TA335309**

ORP8 (OSBPL8) Rabbit Polyclonal Antibody

Product data:

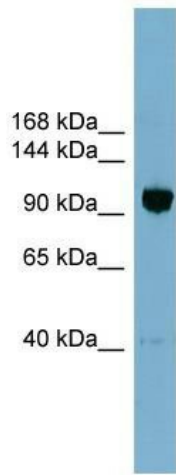
Product Type:	Primary Antibodies
Applications:	WB
Recommended Dilution:	WB
Reactivity:	Human
Host:	Rabbit
Isotype:	IgG
Clonality:	Polyclonal
Immunogen:	The immunogen for anti-OSBPL8 antibody: synthetic peptide directed towards the middle region of human OSBPL8. Synthetic peptide located within the following region: YSSPEPDIQDSSGSEAQSVKPSTRRKKGIELGDIQSSIESIKQTQEEIKR
Formulation:	Liquid. Purified antibody supplied in 1x PBS buffer with 0.09% (w/v) sodium azide and 2% sucrose. <i>Note that this product is shipped as lyophilized powder to China customers.</i>
Purification:	Affinity Purified
Conjugation:	Unconjugated
Storage:	Store at -20°C as received.
Stability:	Stable for 12 months from date of receipt.
Predicted Protein Size:	97 kDa
Gene Name:	oxysterol binding protein like 8
Database Link:	NP_001003712 Entrez Gene 114882 Human Q9BZF1
Background:	OSBPL8 is a member of the oxysterol-binding protein (OSBP) family, a group of intracellular lipid receptors. Like most members, OSBPL8 contains an N-terminal pleckstrin homology domain and a highly conserved C-terminal OSBP-like sterol-binding domain.
Synonyms:	MST120; MSTP120; ORP8; OSBP10
Note:	Immunogen Sequence Homology: Rat: 100%; Human: 100%; Mouse: 100%; Rabbit: 100%; Dog: 93%; Pig: 93%; Horse: 93%; Bovine: 93%; Guinea pig: 93%



[View online »](#)

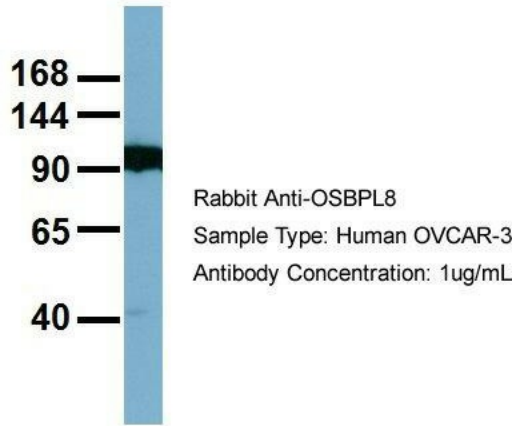
Protein Families: Transmembrane

Product images:



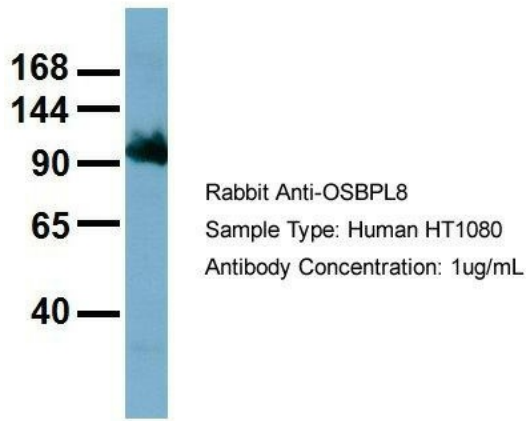
WB Suggested Anti-OSBPL8 Antibody Titration: 0.2-1 ug/ml; Positive Control: OVCAR-3 cell lysate.OSBPL8 is strongly supported by BioGPS gene expression data to be expressed in OVCAR3

OSBPL8



Host: Rabbit; Target Name: OSBPL8; Sample Tissue: OVCAR-3; Antibody Dilution: 1.0 ug/ml.OSBPL8 is strongly supported by BioGPS gene expression data to be expressed in OVCAR3

OSBPL8



Host: Rabbit; Target Name: OSBPL8; Sample Tissue: HT1080; Antibody Dilution: 1.0 ug/ml. OSBPL8 is strongly supported by BioGPS gene expression data to be expressed in Human HT1080 cells