

Product datasheet for **TA335306**

LY6G6F Rabbit Polyclonal Antibody

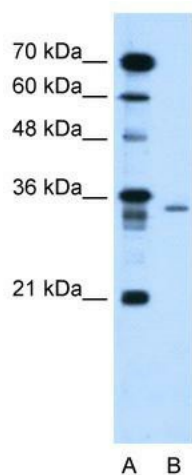
Product data:

Product Type:	Primary Antibodies
Applications:	IHC, WB
Recommended Dilution:	WB, IHC
Reactivity:	Human
Host:	Rabbit
Isotype:	IgG
Clonality:	Polyclonal
Immunogen:	The immunogen for anti-C6orf21 antibody: synthetic peptide directed towards the N terminal of human C6orf21. Synthetic peptide located within the following region: CSPAAGSFTTLVAQVQVGRPADPGKPGRESRLRLGNYSWLEGSKEED
Formulation:	Liquid. Purified antibody supplied in 1x PBS buffer with 0.09% (w/v) sodium azide and 2% sucrose.
Purification:	Protein A purified
Conjugation:	Unconjugated
Storage:	Store at -20°C as received.
Stability:	Stable for 12 months from date of receipt.
Predicted Protein Size:	31 kDa
Gene Name:	lymphocyte antigen 6 complex, locus G6F
Database Link:	NP_001003693 Entrez Gene 259215 Human Q5SQ64
Background:	The function remains unknown.
Synonyms:	C6orf21; G6f; LY6G6D; NG32
Note:	Immunogen Sequence Homology: Human: 100%; Dog: 85%
Protein Families:	Transmembrane

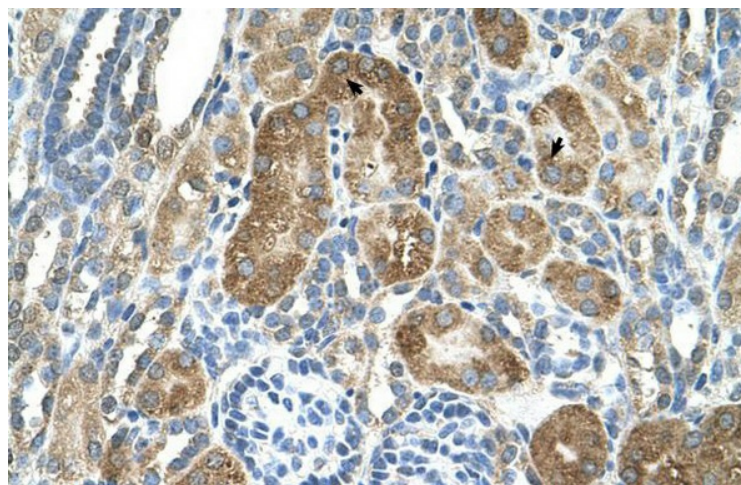


[View online »](#)

Product images:



WB Suggested Anti-C6orf21 Antibody Titration:
1.25 ug/ml; Positive Control: HepG2 cell lysate



Human kidney