

Product datasheet for **TA335305**

Cytochrome b c1 complex subunit 9 (UQCR10) Rabbit Polyclonal Antibody

Product data:

Product Type:	Primary Antibodies
Applications:	IHC, WB
Recommended Dilution:	WB
Reactivity:	Human
Host:	Rabbit
Isotype:	IgG
Clonality:	Polyclonal
Immunogen:	The immunogen for anti-UCRC antibody: synthetic peptide directed towards the middle region of human UCRC. Synthetic peptide located within the following region: LFRRTSTFALTIIVGVMFFERAFDQGADAIYDHINEGKLWKHIKHKYENK
Formulation:	Liquid. Purified antibody supplied in 1x PBS buffer with 0.09% (w/v) sodium azide and 2% sucrose. <i>Note that this product is shipped as lyophilized powder to China customers.</i>
Purification:	Affinity Purified
Conjugation:	Unconjugated
Storage:	Store at -20°C as received.
Stability:	Stable for 12 months from date of receipt.
Predicted Protein Size:	7 kDa
Gene Name:	ubiquinol-cytochrome c reductase, complex III subunit X
Database Link:	NP_037519 Entrez Gene 29796 Human Q9UDW1
Background:	UCRC is a subunit of mitochondrial complex III (ubiquinol-cytochrome c reductase; EC 1.10.2.2), which forms the middle segment of the respiratory chain of the inner mitochondrial membrane. UCRC is a subunit of mitochondrial complex III (ubiquinol-cytochrome c reductase; EC 1.10.2.2), which forms the middle segment of the respiratory chain of the inner mitochondrial membrane (Schagger et al., 1995 [PubMed 8592474]). [supplied by OMIM]
Synonyms:	HSPC051; HSPC119; HSPC151; QCR9; UCCR7.2; UCRC



[View online »](#)

Note: Immunogen Sequence Homology: Rat: 100%; Human: 100%; Mouse: 93%; Bovine: 93%; Dog: 86%; Pig: 86%; Rabbit: 86%; Guinea pig: 86%

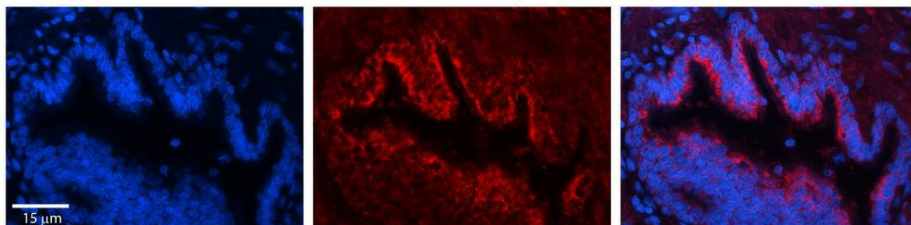
Protein Families: Transmembrane

Protein Pathways: Alzheimer's disease, Cardiac muscle contraction, Huntington's disease, Metabolic pathways, Oxidative phosphorylation, Parkinson's disease

Product images:



WB Suggested Anti-UQCR10 Antibody Titration: 0.2-1 ug/ml; ELISA Titer: 1: 62500; Positive Control: MCF7 cell lysate. UQCR10 is supported by BioGPS gene expression data to be expressed in MCF7



Rabbit Anti-UQCR10 Antibody; Formalin Fixed Paraffin Embedded Tissue: Human Bronchial Epithelial Tissue; Observed Staining: Cytoplasmic; Primary Antibody Concentration: 1: 100; Other Working Concentrations: 1/600; Secondary Antibody: Donkey anti-Rabbit-Cy