

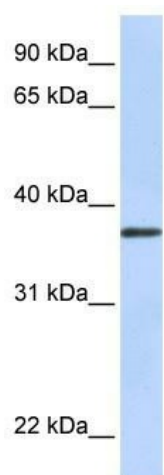
## Product datasheet for **TA335304**

### TTMB (TMEM200B) Rabbit Polyclonal Antibody

#### Product data:

Product Type:	Primary Antibodies
Applications:	WB
Recommended Dilution:	WB
Reactivity:	Human
Host:	Rabbit
Isotype:	IgG
Clonality:	Polyclonal
Immunogen:	The immunogen for anti-TTMB antibody: synthetic peptide directed towards the N terminal of human TTMB. Synthetic peptide located within the following region: AGYWPHRAGAPGSRAANASSPQMSELRREGRGGGRAHGPHERLRLGPI
Formulation:	Liquid. Purified antibody supplied in 1x PBS buffer with 0.09% (w/v) sodium azide and 2% sucrose.
Purification:	Affinity Purified
Conjugation:	Unconjugated
Storage:	Store at -20°C as received.
Stability:	Stable for 12 months from date of receipt.
Predicted Protein Size:	33 kDa
Gene Name:	transmembrane protein 200B
Database Link:	<a href="#">NP_001003682</a> <a href="#">Entrez Gene 399474 Human</a> <a href="#">Q69YZ2</a>
Background:	TTMB is a multi-pass membrane protein. It belongs to the TMEM200 family. The function of the TTMB protein remains unknown.
Synonyms:	TTMB
Note:	Immunogen Sequence Homology: Human: 100%; Pig: 86%; Guinea pig: 86%; Dog: 85%
Protein Families:	Transmembrane


[View online »](#)

**Product images:**


WB Suggested Anti-TTMB Antibody Titration: 0.2-1 ug/ml; ELISA Titer: 1: 1562500; Positive Control: Human Placenta