

Product datasheet for **TA335300**

MCTP1 Rabbit Polyclonal Antibody

Product data:

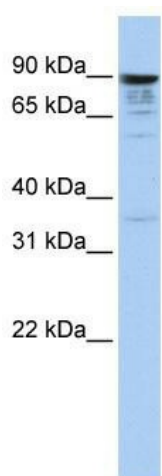
Product Type:	Primary Antibodies
Applications:	IHC, WB
Recommended Dilution:	WB, IHC
Reactivity:	Human
Host:	Rabbit
Isotype:	IgG
Clonality:	Polyclonal
Immunogen:	The immunogen for anti-MCTP1 antibody: synthetic peptide directed towards the middle region of human MCTP1. Synthetic peptide located within the following region: LWVGINKFTKLRSPYAIDNNEFLSLRVPDQVQVQYQELKPDPSHSP
Formulation:	Liquid. Purified antibody supplied in 1x PBS buffer with 0.09% (w/v) sodium azide and 2% sucrose. <i>Note that this product is shipped as lyophilized powder to China customers.</i>
Purification:	Affinity Purified
Conjugation:	Unconjugated
Storage:	Store at -20°C as received.
Stability:	Stable for 12 months from date of receipt.
Predicted Protein Size:	89 kDa
Gene Name:	multiple C2 and transmembrane domain containing 1
Database Link:	NP_001002796 Entrez Gene 79772 Human Q6DN14
Background:	MCTP1 belongs to the MCTP family. It contains 3 C2 domains. MCTP1 is a multi-pass membrane protein. It binds calcium via the C2 domains in absence of phospholipids. The function of MCTP1 remains unknown.
Synonyms:	FLJ22344
Note:	Immunogen Sequence Homology: Dog: 100%; Pig: 100%; Rat: 100%; Horse: 100%; Human: 100%; Mouse: 100%; Guinea pig: 100%; Bovine: 93%; Rabbit: 86%; Zebrafish: 86%



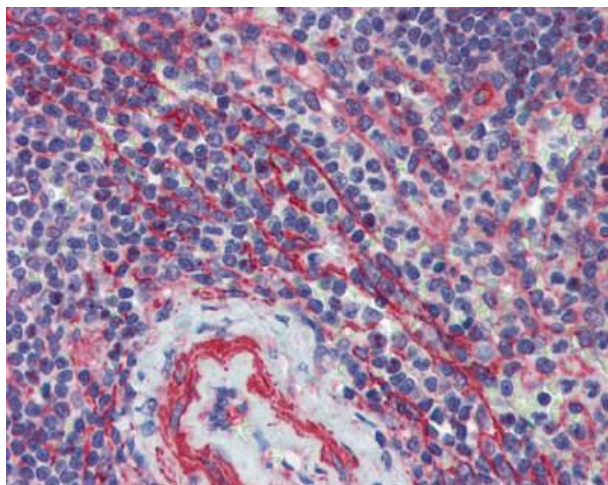
[View online »](#)

Protein Families: Transmembrane

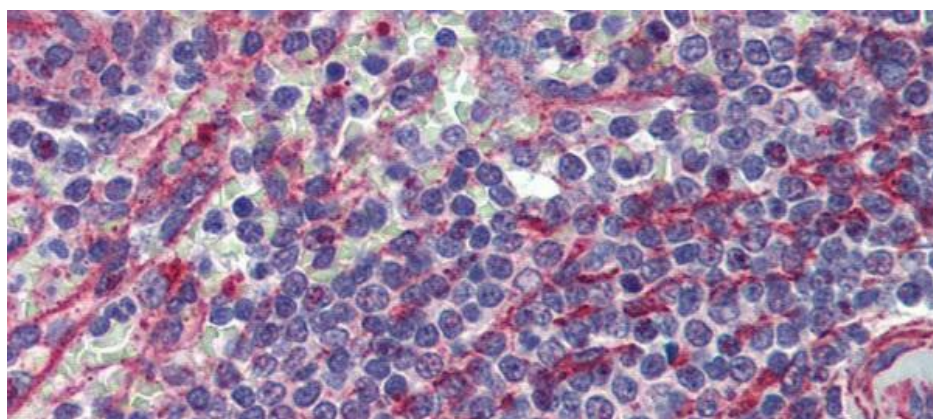
Product images:



WB Suggested Anti-MCTP1 Antibody Titration: 1 ug/ml; Positive Control: Hela cell lysate



Anti-MCTP1 antibody IHC staining of human spleen. Immunohistochemistry of formalin-fixed, paraffin-embedded tissue after heat-induced antigen retrieval. Antibody concentration 5 ug/ml.



Rabbit Anti-MCTP1 Antibody; Paraffin Embedded Tissue: Human Spleen; Antibody Concentration: 5 ug/ml