

Product datasheet for TA335299

MCTP1 Rabbit Polyclonal Antibody

Product data:

Product Type:	Primary Antibodies
Applications:	WB
Recommended Dilution:	WB, IHC
Reactivity:	Human
Host:	Rabbit
Isotype:	IgG
Clonality:	Polyclonal
Immunogen:	The immunogen for anti-MCTP1 antibody: synthetic peptide directed towards the middle region of human MCTP1. Synthetic peptide located within the following region: EVTYDEDRDRSADFLGKVAIPLLSIQNGEQKAYVLKNKQLTGPTKGVY
Formulation:	Liquid. Purified antibody supplied in 1x PBS buffer with 0.09% (w/v) sodium azide and 2% sucrose.
Purification:	Affinity Purified
Conjugation:	Unconjugated
Storage:	Store at -20°C as received.
Stability:	Stable for 12 months from date of receipt.
Predicted Protein Size:	89 kDa
Gene Name:	multiple C2 and transmembrane domain containing 1
Database Link:	NP_001002796 Entrez Gene 79772 Human Q6DN14
Background:	MCTP1 belongs to the MCTP family. It contains 3 C2 domains. MCTP1 is a multi-pass membrane protein. It binds calcium via the C2 domains in absence of phospholipids. The function of MCTP1 remains unknown.
Synonyms:	FLJ22344
Note:	Immunogen Sequence Homology: Dog: 100%; Pig: 100%; Rat: 100%; Horse: 100%; Human: 100%; Mouse: 100%; Zebrafish: 100%; Guinea pig: 100%


[View online »](#)

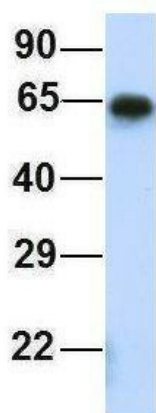
Protein Families: Transmembrane

Product images:



WB Suggested Anti-MCTP1 Antibody Titration: 1 ug/ml; Positive Control: Jurkat cell lysate

MCTP1



Rabbit Anti-MCTP1
Sample Type: Human Fetal Muscle
Antibody Concentration: 1ug/mL

Host: Rabbit; Target Name: MCTP1; Sample
Tissue: Human Fetal Muscle; Antibody Dilution:
1.0 ug/ml

MCTP1



Rabbit Anti-MCTP1

Sample Type: Human Adult Placenta

Antibody Concentration: 1ug/mL

Host: Rabbit; Target Name: MCTP1; Sample Tissue: Human Adult Placenta; Antibody Dilution: 1.0 ug/ml