

## Product datasheet for **TA335298**

### MCTP1 Rabbit Polyclonal Antibody

#### Product data:

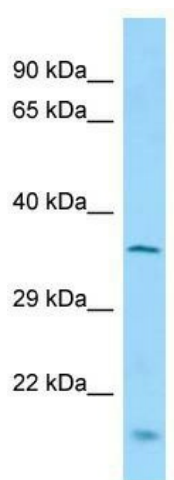
Product Type:	Primary Antibodies
Applications:	WB
Recommended Dilution:	WB
Reactivity:	Mouse
Host:	Rabbit
Isotype:	IgG
Clonality:	Polyclonal
Immunogen:	The immunogen for anti-Mctp1 antibody is: synthetic peptide directed towards the N-terminal region of Mouse Mctp1. Synthetic peptide located within the following region: LAARDRGGTSDPYVKFKIGRKEVFRSKIIHKLNPNVWEEKACVLIDHLRE
Formulation:	Liquid. Purified antibody supplied in 1x PBS buffer with 0.09% (w/v) sodium azide and 2% sucrose. <i>Note that this product is shipped as lyophilized powder to China customers.</i>
Purification:	Affinity Purified
Conjugation:	Unconjugated
Storage:	Store at -20°C as received.
Stability:	Stable for 12 months from date of receipt.
Predicted Protein Size:	35 kDa
Gene Name:	multiple C2 and transmembrane domain containing 1
Database Link:	<a href="#">NP_078993</a> <a href="#">Entrez Gene 78771 Mouse</a> <a href="#">Q6DN14</a>
Background:	Mctp1 is a sugar transporter that specifically mediates the transport of UDP-xylose (UDP-Xyl) and UDP-N-acetylglucosamine (UDP-GlcNAc) from cytosol into Golgi.
Synonyms:	FLJ22344
Note:	Immunogen Sequence Homology: Dog: 100%; Pig: 100%; Rat: 100%; Horse: 100%; Human: 100%; Mouse: 100%; Bovine: 100%; Zebrafish: 100%; Guinea pig: 100%; Rabbit: 93%; Yeast: 83%



[View online »](#)

Protein Families: Transmembrane

### Product images:



Host: Rabbit; Target Name: Mctp1; Sample  
Tissue: Mouse Lung lysates; Antibody Dilution:  
1.0 ug/ml