

Product datasheet for **TA335292**

GPR177 (WLS) Rabbit Polyclonal Antibody

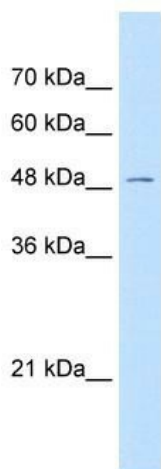
Product data:

Product Type:	Primary Antibodies
Applications:	IHC, WB
Recommended Dilution:	WB, IHC
Reactivity:	Human
Host:	Rabbit
Isotype:	IgG
Clonality:	Polyclonal
Immunogen:	The immunogen for anti-GPR177 antibody: synthetic peptide directed towards the N terminal of human GPR177. Synthetic peptide located within the following region: ARKNHHKTKWFVPWGPNHCDKIRDIEEAIPREIEANDIVFSVHIPLPHME
Formulation:	Liquid. Purified antibody supplied in 1x PBS buffer with 0.09% (w/v) sodium azide and 2% sucrose. <i>Note that this product is shipped as lyophilized powder to China customers.</i>
Purification:	Affinity Purified
Conjugation:	Unconjugated
Storage:	Store at -20°C as received.
Stability:	Stable for 12 months from date of receipt.
Predicted Protein Size:	52 kDa
Gene Name:	wntless Wnt ligand secretion mediator
Database Link:	NP_001002292 Entrez Gene 79971 Human Q5T9L3
Background:	The function remains unknown.
Synonyms:	C1orf139; EVI; GPR177; mig-14; MRP
Note:	Immunogen Sequence Homology: Dog: 100%; Pig: 100%; Rat: 100%; Horse: 100%; Human: 100%; Mouse: 100%; Bovine: 100%; Rabbit: 100%; Guinea pig: 93%
Protein Families:	Transmembrane

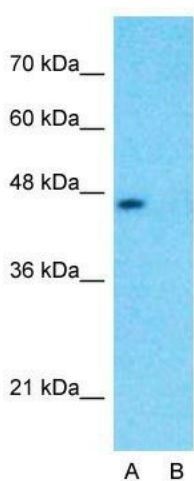


[View online »](#)

Product images:



WB Suggested Anti-GPR177 Antibody Titration:
0.5 ug/ml; Positive Control: Jurkat cell lysate



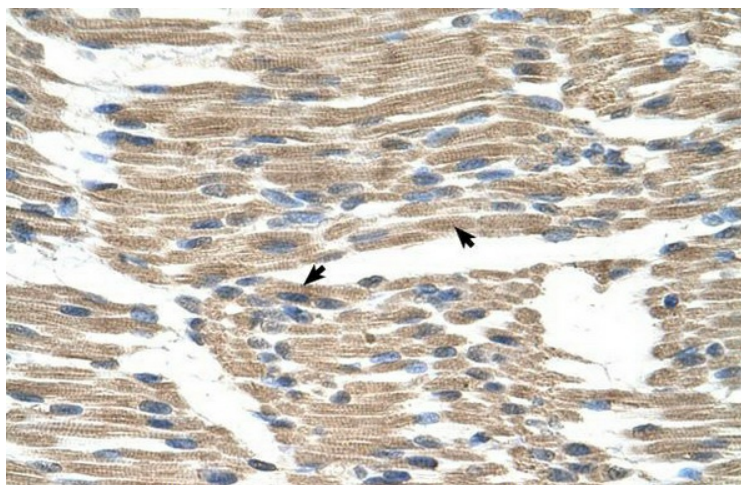
Anti-GPR177 Western Blot & Peptide Block Validation

Lysate: Fetal Liver

Lane A: Primary Antibody
Lane B: Primary Antibody + Blocking Peptide

Primary Antibody Concentration: 1.0µg/ml
Peptide Concentration: 5.0µg/ml
Lysate Quantity: 25µg/lane
Gel Concentration: 12%

Host: Rabbit; Target Name: GPR177; Sample Tissue: Human Fetal Liver; Lane A: Primary Antibody; Lane B: Primary Antibody + Blocking Peptide; Primary Antibody Concentration: 1 ug/ml; Peptide Concentration: 5 ug/ml; Lysate Quantity: 25 ug/lane/lane; Gel Conc



Human Muscle