

Product datasheet for **TA335291**

ZFYVE27 Rabbit Polyclonal Antibody

Product data:

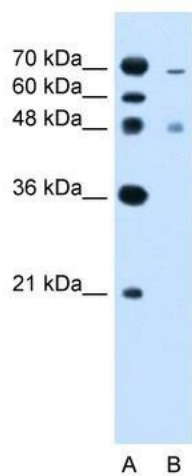
Product Type:	Primary Antibodies
Applications:	WB
Recommended Dilution:	WB
Reactivity:	Human
Host:	Rabbit
Isotype:	IgG
Clonality:	Polyclonal
Immunogen:	The immunogen for anti-ZFYVE27 antibody: synthetic peptide directed towards the C terminal of human ZFYVE27. Synthetic peptide located within the following region: TFSVLKRRRSCSNCGNSFCSCCSFKVPKSSMGATAPEAQRETVFVCASC
Formulation:	Liquid. Purified antibody supplied in 1x PBS buffer with 0.09% (w/v) sodium azide and 2% sucrose. <i>Note that this product is shipped as lyophilized powder to China customers.</i>
Purification:	Protein A purified
Conjugation:	Unconjugated
Storage:	Store at -20°C as received.
Stability:	Stable for 12 months from date of receipt.
Predicted Protein Size:	46 kDa
Gene Name:	zinc finger FYVE-type containing 27
Database Link:	NP_001002261 Entrez Gene 118813 Human Q5T4F4
Background:	ZFYVE27 may be associated with the neuronal intracellular trafficking in the corticospinal tract, which is consistent with the pathology of HSP.
Synonyms:	PROTRUDIN; SPG33
Note:	Immunogen Sequence Homology: Dog: 100%; Pig: 100%; Rat: 100%; Horse: 100%; Human: 100%; Mouse: 100%; Bovine: 100%; Rabbit: 100%; Zebrafish: 100%; Guinea pig: 100%



[View online »](#)

Protein Families: Transmembrane

Product images:



WB Suggested Anti-ZFYVE27 Antibody Titration:
2.5 ug/ml; Positive Control: Jurkat cell lysate