

Product datasheet for **TA335290**

ZFYVE27 Rabbit Polyclonal Antibody

Product data:

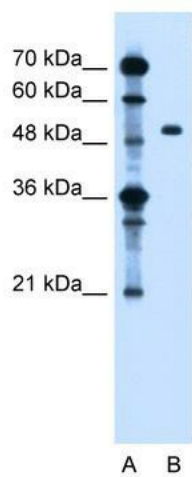
| | |
|-------------------------|--|
| Product Type: | Primary Antibodies |
| Applications: | WB |
| Recommended Dilution: | WB |
| Reactivity: | Human |
| Host: | Rabbit |
| Isotype: | IgG |
| Clonality: | Polyclonal |
| Immunogen: | The immunogen for anti-ZFYVE27 antibody: synthetic peptide directed towards the middle region of human ZFYVE27. Synthetic peptide located within the following region: VGGKDG LMDSTPALTPTESLSSQDLTPGSVEEAEAEAEPEDEEFKDAIEETH |
| Formulation: | Liquid. Purified antibody supplied in 1x PBS buffer with 0.09% (w/v) sodium azide and 2% sucrose. <i>Note that this product is shipped as lyophilized powder to China customers.</i> |
| Purification: | Protein A purified |
| Conjugation: | Unconjugated |
| Storage: | Store at -20°C as received. |
| Stability: | Stable for 12 months from date of receipt. |
| Predicted Protein Size: | 46 kDa |
| Gene Name: | zinc finger FYVE-type containing 27 |
| Database Link: | NP_001002261 Entrez Gene 118813 Human Q5T4F4 |
| Background: | ZFYVE27 may be associated with the neuronal intracellular trafficking in the corticospinal tract, which is consistent with the pathology of HSP. |
| Synonyms: | PROTRUDIN; SPG33 |
| Note: | Immunogen Sequence Homology: Dog: 100%; Pig: 100%; Rat: 100%; Horse: 100%; Human: 100%; Mouse: 100%; Bovine: 100%; Rabbit: 100%; Guinea pig: 100%; Zebrafish: 82%; Yeast: 75% |



[View online »](#)

Protein Families: Transmembrane

Product images:



WB Suggested Anti-ZFYVE27 Antibody Titration:
1.25 ug/ml; Positive Control: Jurkat cell lysate