

Product datasheet for **TA335289**

LCLAT1 Rabbit Polyclonal Antibody

Product data:

Product Type:	Primary Antibodies
Applications:	WB
Recommended Dilution:	WB
Reactivity:	Human
Host:	Rabbit
Isotype:	IgG
Clonality:	Polyclonal
Immunogen:	The immunogen for anti-LYCAT antibody: synthetic peptide directed towards the middle region of human LYCAT. Synthetic peptide located within the following region: YL Y SLVKWYFIITIVIFVLQERIFGGLEIIE L ELACYRLLHKQPHLNSKKNE
Formulation:	Liquid. Purified antibody supplied in 1x PBS buffer with 0.09% (w/v) sodium azide and 2% sucrose. <i>Note that this product is shipped as lyophilized powder to China customers.</i>
Purification:	Affinity Purified
Conjugation:	Unconjugated
Storage:	Store at -20°C as received.
Stability:	Stable for 12 months from date of receipt.
Predicted Protein Size:	44 kDa
Gene Name:	lysocardiolipin acyltransferase 1
Database Link:	NP_001002257 Entrez Gene 253558 Human Q6UWP7



[View online »](#)

Background:

LYCAT is an acyl-CoA:lysocardiolipin acyltransferase. It possesses both lysophosphatidylinositol acyltransferase (LPIAT) and lysophosphatidylglycerol acyltransferase (LPGAT) activities. LYCAT recognizes both monolysocardiolipin and dilyocardiolipin as substrates with a preference for linoleoyl-CoA and oleoyl-CoA as acyl donors. LYCAT acts as a remodeling enzyme for cardiolipin, a major membrane polyglycerophospholipid. It converts lysophosphatidic acid (LPA) into phosphatidic acid (PA) with a relatively low activity. LYCAT is required for establishment of the hematopoietic and endothelial lineages.

Synonyms:

1AGPAT8; AGPAT8; ALCAT1; HSRG1849; LYCAT; UNQ1849

Note:

Immunogen Sequence Homology: Human: 100%; Rabbit: 100%; Horse: 93%; Bovine: 93%; Dog: 92%; Pig: 92%; Rat: 92%; Mouse: 92%; Guinea pig: 92%

Protein Families:

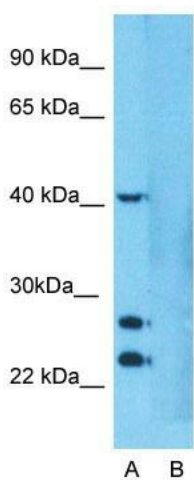
Transmembrane

Protein Pathways:

Ether lipid metabolism, Glycerolipid metabolism, Glycerophospholipid metabolism, Limonene and pinene degradation, Metabolic pathways, Phenylalanine metabolism, Tyrosine metabolism

Product images:

WB Suggested Anti-LYCAT Antibody Titration: 0.2-1 ug/ml; ELISA Titer: 1: 1562500; Positive Control: 721_B cell lysate



Anti-LCLAT1 Western Blot & Peptide Block Validation

Lysate: 721_B Cell

Lane A: Primary Antibody
Lane B: Primary Antibody + Blocking Peptide

Primary Antibody Concentration: 2.0 µg/ml
Peptide Concentration: 5.0 µg/ml
Lysate Quantity: 25 µg/lane
Gel Concentration: 12%

Host: Rabbit; Target Name: LCLAT1; Sample Tissue: Human 721_B cell; Lane A: Primary Antibody; Lane B: Primary Antibody + Blocking Peptide; Primary Antibody Concentration: 1 µg/ml; Peptide Concentration: 5.0 µg/ml; Lysate Quantity: 25 µg/lane/lane; Gel Con