

Product datasheet for **TA335287**

MTUS1 Rabbit Polyclonal Antibody

Product data:

Product Type:	Primary Antibodies
Applications:	IHC, WB
Recommended Dilution:	WB
Reactivity:	Human
Host:	Rabbit
Isotype:	IgG
Clonality:	Polyclonal
Immunogen:	The immunogen for anti-MTUS1 antibody: synthetic peptide directed towards the middle region of human MTUS1. Synthetic peptide located within the following region: KRLSMENEELLWKLHNGDLCSPKRSPTSSAIPLQSPRNSGSPSPSISPR
Formulation:	Liquid. Purified antibody supplied in 1x PBS buffer with 0.09% (w/v) sodium azide and 2% sucrose. <i>Note that this product is shipped as lyophilized powder to China customers.</i>
Purification:	Affinity Purified
Conjugation:	Unconjugated
Storage:	Store at -20°C as received.
Stability:	Stable for 12 months from date of receipt.
Predicted Protein Size:	141 kDa
Gene Name:	microtubule associated tumor suppressor 1
Database Link:	NP_001001924 Entrez Gene 57509 Human Q9ULD2



[View online »](#)

Background:

MTUS1 contains a C-terminal domain and is able to interact with the angiotension II (AT2) receptor and a large coiled-coil region allowing dimerization. One of the isoforms has been shown to be a mitochondrial protein that acts as a tumor suppressor and participates in AT2 signaling pathways. Other isoforms may be nuclear or transmembrane proteins but it has not been determined whether they also participate in AT2 signaling pathways. This gene encodes a protein which contains a C-terminal domain able to interact with the angiotension II (AT2) receptor and a large coiled-coil region allowing dimerization. Multiple alternatively spliced transcript variants encoding different isoforms have been found for this gene. One of the transcript variants has been shown to encode a mitochondrial protein that acts as a tumor suppressor and participates in AT2 signaling pathways. Other variants may encode nuclear or transmembrane proteins but it has not been determined whether they also participate in AT2 signaling pathways.

Synonyms:

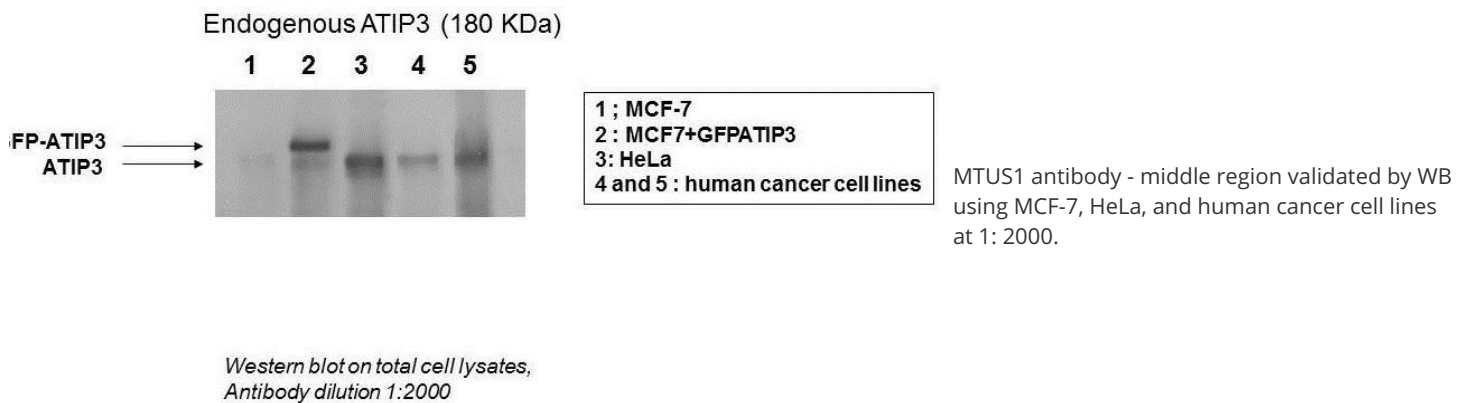
ATBP; ATIP; ICIS; MP44; MTSG1

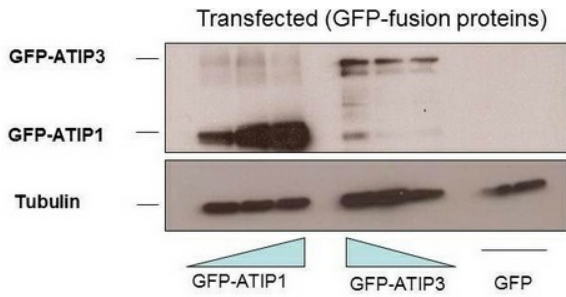
Note:

Immunogen Sequence Homology: Dog: 100%; Human: 100%; Bovine: 100%; Rat: 93%; Mouse: 93%; Pig: 86%; Rabbit: 86%; Guinea pig: 86%

Protein Families:

Druggable Genome, Transcription Factors, Transmembrane

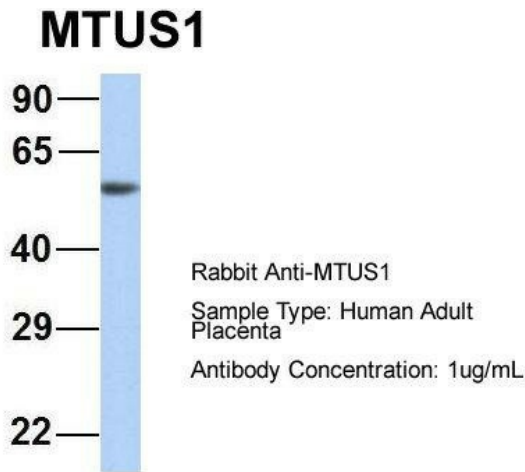
Product images:




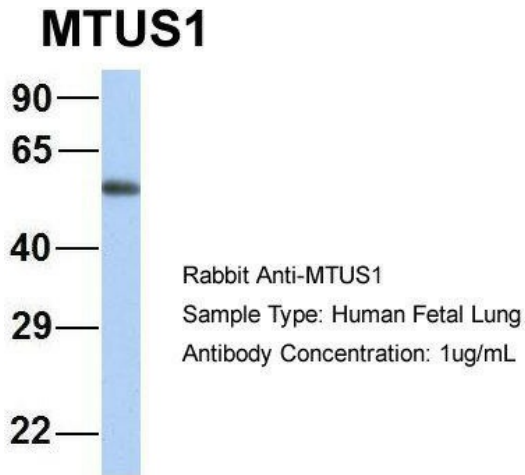
MTUS1 antibody - middle region validated by WB using MCF-7, HeLa, and human cancer cell lines at 1: 2000.

MCF7 cellstransfected with GFP-ATIP1 (80 KDa), GFP-ATIP3 (210 KDa), GFP (30 KDa)
Western blot on total cell lysates,
Antibody dilution 1:2000

Reblotted anti-tubulin

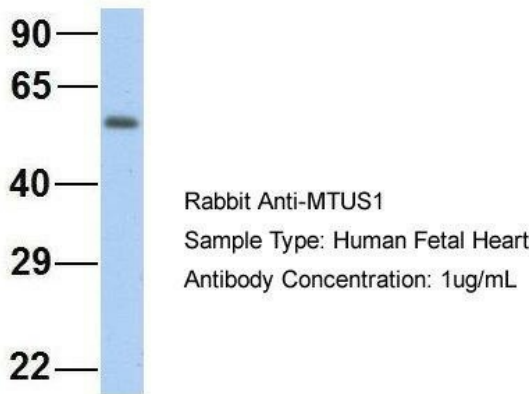


3Hum. Adult Placenta; Host: Rabbit; Target Name: CHAD; Sample Tissue: Human Adult Placenta; Antibody Dilution: 1.0 ug/ml



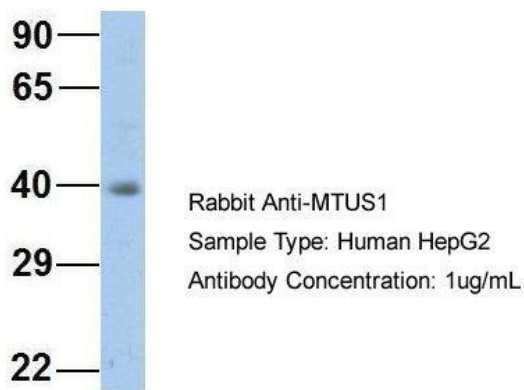
4Hum. Fetal Lung; Host: Rabbit; Target Name: NSUN6; Sample Tissue: Human Fetal Lung; Antibody Dilution: 1.0 ug/ml

MTUS1



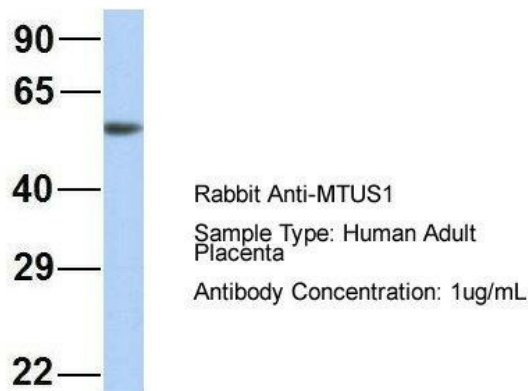
5Hum. Fetal Heart; Host: Rabbit; Target Name: GNAS; Sample Tissue: Human Fetal Heart; Antibody Dilution: 1.0 µg/ml

MTUS1



6Human HepG2; Host: Rabbit; Target Name: EGFL8; Sample Tissue: HepG2; Antibody Dilution: 1.0 µg/ml. MTUS1 is strongly supported by BioGPS gene expression data to be expressed in HepG2

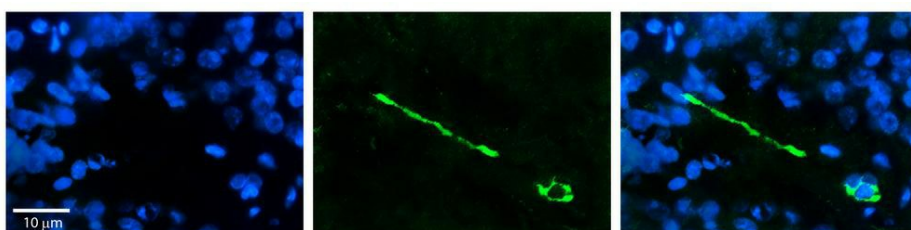
MTUS1



7Hum. Adult Placenta; Host: Rabbit; Target Name: CHAD; Sample Tissue: Human Adult Placenta; Antibody Dilution: 1.0 µg/ml



WB Suggested Anti-MTUS1 Antibody Titration: 0.2-1 ug/ml; ELISA Titer: 1: 1562500; Positive Control: HeLa cell lysate. MTUS1 is strongly supported by BioGPS gene expression data to be expressed in Human HeLa cells



Rabbit Anti-MTUS1 Antibody; Formalin Fixed Paraffin Embedded Tissue: Human Pineal Tissue; Observed Staining: Cytoplasmic and membrane in cell bodies of pinealocytes and their processes; Primary Antibody Concentration: 1: 100; Other Working Concentrations: