

Product datasheet for **TA335286**

MTUS1 Rabbit Polyclonal Antibody

Product data:

Product Type:	Primary Antibodies
Applications:	WB
Recommended Dilution:	WB
Reactivity:	Human
Host:	Rabbit
Isotype:	IgG
Clonality:	Polyclonal
Immunogen:	The immunogen for anti-MTUS1 antibody: synthetic peptide directed towards the N terminal of human MTUS1. Synthetic peptide located within the following region: QLLACGNTKFEALTVVIQHLLSEREEALKQHKTLSQELVNLRGELVTAST
Formulation:	Liquid. Purified antibody supplied in 1x PBS buffer with 0.09% (w/v) sodium azide and 2% sucrose. <i>Note that this product is shipped as lyophilized powder to China customers.</i>
Purification:	Protein A purified
Conjugation:	Unconjugated
Storage:	Store at -20°C as received.
Stability:	Stable for 12 months from date of receipt.
Predicted Protein Size:	48 kDa
Gene Name:	microtubule associated tumor suppressor 1
Database Link:	NP_065800 Entrez Gene 57509 Human Q9ULD2



[View online »](#)

Background:

MTUS1 contains a C-terminal domain and is able to interact with the angiotension II (AT2) receptor and a large coiled-coil region allowing dimerization. One of the isoforms has been shown to be a mitochondrial protein that acts as a tumor suppressor and participates in AT2 signaling pathways. Other isoforms may be nuclear or transmembrane proteins but it has not been determined whether they also participate in AT2 signaling pathways. This gene encodes a protein which contains a C-terminal domain able to interact with the angiotension II (AT2) receptor and a large coiled-coil region allowing dimerization. Multiple alternatively spliced transcript variants encoding different isoforms have been found for this gene. One of the transcript variants has been shown to encode a mitochondrial protein that acts as a tumor suppressor and participates in AT2 signaling pathways. Other variants may encode nuclear or transmembrane proteins but it has not been determined whether they also participate in AT2 signaling pathways.

Synonyms:

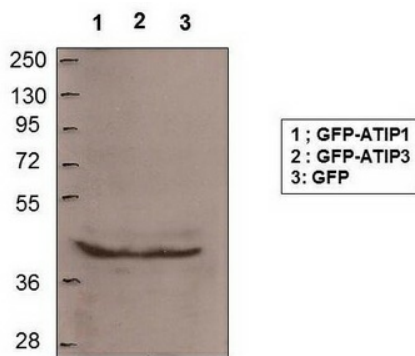
ATBP; ATIP; ICIS; MP44; MTSG1

Note:

Immunogen Sequence Homology: Dog: 100%; Pig: 100%; Rat: 100%; Horse: 100%; Human: 100%; Mouse: 100%; Rabbit: 100%; Guinea pig: 100%; Bovine: 93%

Protein Families:

Druggable Genome, Transcription Factors, Transmembrane

Product images:

WB Suggested Anti-MTUS1 Antibody Titration:
Positive Control: Total Cell Lysates

*MCF7 cells transfected with GFP-ATIP1 (80 KDa), GFP-ATIP3 (210 KDa), GFP (30 KDa)
Western blot on total cell lysates,
Antibody dilution 1:200*