

## Product datasheet for **TA335283**

### beta 1 Sodium Potassium ATPase (ATP1B1) Rabbit Polyclonal Antibody

#### Product data:

Product Type:	Primary Antibodies
Applications:	WB
Recommended Dilution:	WB
Reactivity:	Human
Host:	Rabbit
Isotype:	IgG
Clonality:	Polyclonal
Immunogen:	The immunogen for anti-ATP1B1 antibody: synthetic peptide directed towards the N terminal of human ATP1B1. Synthetic peptide located within the following region: RVAPPGLTQIPQIQKTEISFRPNPKSYEAYVLNIVRFLEKYKDSAQRDD
Formulation:	Liquid. Purified antibody supplied in 1x PBS buffer with 0.09% (w/v) sodium azide and 2% sucrose. <i>Note that this product is shipped as lyophilized powder to China customers.</i>
Purification:	Affinity Purified
Conjugation:	Unconjugated
Storage:	Store at -20°C as received.
Stability:	Stable for 12 months from date of receipt.
Predicted Protein Size:	35 kDa
Gene Name:	ATPase Na <sup>+</sup> /K <sup>+</sup> transporting subunit beta 1
Database Link:	<a href="#">NP_001001787</a> <a href="#">Entrez Gene 481 Human</a> <a href="#">P05026</a>



[View online »](#)

**Background:**

The protein encoded by this gene belongs to the family of Na<sup>+</sup>/K<sup>+</sup> and H<sup>+</sup>/K<sup>+</sup> ATPases beta chain proteins, and to the subfamily of Na<sup>+</sup>/K<sup>+</sup> -ATPases. Na<sup>+</sup>/K<sup>+</sup> -ATPase is an integral membrane protein responsible for establishing and maintaining the electrochemical gradients of Na and K ions across the plasma membrane. These gradients are essential for osmoregulation, for sodium-coupled transport of a variety of organic and inorganic molecules, and for electrical excitability of nerve and muscle. This enzyme is composed of two subunits, a large catalytic subunit (alpha) and a smaller glycoprotein subunit (beta). The beta subunit regulates, through assembly of alpha/beta heterodimers, the number of sodium pumps transported to the plasma membrane. The glycoprotein subunit of Na<sup>+</sup>/K<sup>+</sup> -ATPase is encoded by multiple genes. This gene encodes a beta 1 subunit. Alternatively spliced transcript variants encoding different isoforms have been described, but their biological validity is not known. [provided by RefSeq, Mar 2010]

**Synonyms:**

ATP1B; MGC1798

**Note:**

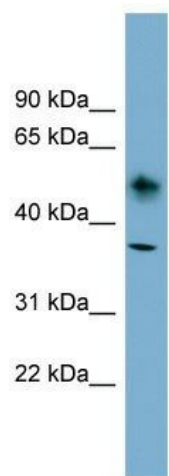
Immunogen Sequence Homology: Dog: 100%; Rat: 100%; Horse: 100%; Human: 100%; Mouse: 100%; Pig: 93%; Sheep: 93%; Bovine: 93%; Guinea pig: 93%; Rabbit: 86%

**Protein Families:**

Transmembrane

**Protein Pathways:**

Cardiac muscle contraction

**Product images:**

WB Suggested Anti-ATP1B1 Antibody Titration:  
0.2-1 ug/ml; Positive Control: OVCAR-3 cell lysate