

## Product datasheet for **TA335281**

### C4orf3 Rabbit Polyclonal Antibody

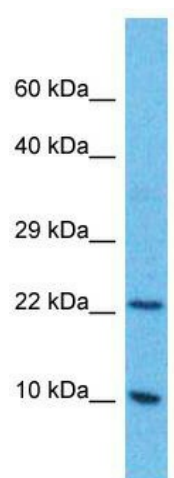
#### Product data:

Product Type:	Primary Antibodies
Applications:	WB
Recommended Dilution:	WB
Reactivity:	Human
Host:	Rabbit
Isotype:	IgG
Clonality:	Polyclonal
Immunogen:	The immunogen for anti-C4orf3 antibody is: synthetic peptide directed towards the middle region of Human C4orf3. Synthetic peptide located within the following region: RSEMEVDAPGVDGRDGLRERRGFSEGGQRQNFDFRPQSGANGLPKHSYWLD
Formulation:	Liquid. Purified antibody supplied in 1x PBS buffer with 0.09% (w/v) sodium azide and 2% sucrose.
Purification:	Affinity Purified
Conjugation:	Unconjugated
Storage:	Store at -20°C as received.
Stability:	Stable for 12 months from date of receipt.
Predicted Protein Size:	21 kDa
Gene Name:	chromosome 4 open reading frame 3
Database Link:	<a href="#">NP_001163801</a> <a href="#">Entrez Gene 401152 Human</a> <a href="#">Q8WVX3</a>
Background:	The function of this protein remains unknown.
Synonyms:	C4orf3
Note:	Immunogen Sequence Homology: Human: 100%
Protein Families:	Transmembrane



[View online »](#)

## Product images:



Host: Rabbit; Target Name: C4orf3; Sample  
Tissue: Thymus Tumor lysates; Antibody Dilution:  
1.0 ug/ml