

Product datasheet for **TA335280**

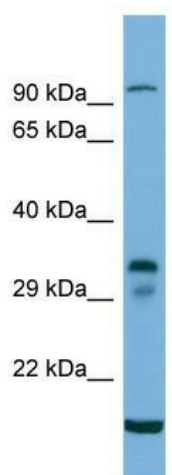
TM6SF2 Rabbit Polyclonal Antibody

Product data:

Product Type:	Primary Antibodies
Applications:	WB
Recommended Dilution:	WB
Reactivity:	Human
Host:	Rabbit
Isotype:	IgG
Clonality:	Polyclonal
Immunogen:	The immunogen for anti-TM6SF2 antibody is: synthetic peptide directed towards the C-terminal region of Human TM6SF2. Synthetic peptide located within the following region: FFTLFRGLVWLD CPTDACFVYIQYEPYLRDPVAYPKVQMLMYMFVLPF
Formulation:	Liquid. Purified antibody supplied in 1x PBS buffer with 0.09% (w/v) sodium azide and 2% sucrose. <i>Note that this product is shipped as lyophilized powder to China customers.</i>
Purification:	Affinity Purified
Conjugation:	Unconjugated
Storage:	Store at -20°C as received.
Stability:	Stable for 12 months from date of receipt.
Predicted Protein Size:	38 kDa
Gene Name:	transmembrane 6 superfamily member 2
Database Link:	NP_001001524 Entrez Gene 53345 Human Q9BZW4
Background:	The function of this protein remains unknown.
Synonyms:	KIAA1926
Note:	Immunogen Sequence Homology: Dog: 100%; Pig: 100%; Rat: 100%; Horse: 100%; Human: 100%; Mouse: 100%; Guinea pig: 100%; Bovine: 93%; Rabbit: 75%
Protein Families:	Transmembrane



[View online »](#)

Product images:

Host: Rabbit; Target Name: TM6SF2; Sample
Tissue: 293T Whole cell lysates; Antibody Dilution:
1.0 ug/ml