

Product datasheet for **TA335278**

ZDHHC13 Rabbit Polyclonal Antibody

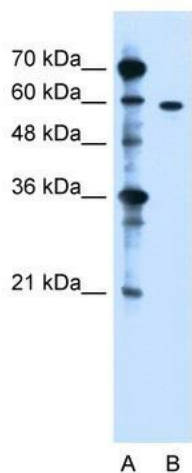
Product data:

Product Type:	Primary Antibodies
Applications:	IHC, WB
Recommended Dilution:	WB, IHC
Reactivity:	Human
Host:	Rabbit
Isotype:	IgG
Clonality:	Polyclonal
Immunogen:	The immunogen for anti-ZDHHC13 antibody: synthetic peptide directed towards the N terminal of human ZDHHC13. Synthetic peptide located within the following region: MVILLLQHGDPTLIDGEGFSSIH L AVL FQHMP I IAYLISKGQSVNMTDV
Formulation:	Liquid. Purified antibody supplied in 1x PBS buffer with 0.09% (w/v) sodium azide and 2% sucrose. <i>Note that this product is shipped as lyophilized powder to China customers.</i>
Purification:	Protein A purified
Conjugation:	Unconjugated
Storage:	Store at -20°C as received.
Stability:	Stable for 12 months from date of receipt.
Predicted Protein Size:	54 kDa
Gene Name:	zinc finger DHHC-type containing 13
Database Link:	NP_001001483 Entrez Gene 54503 Human Q8IUH4
Background:	ZDHHC13 may be involved in the NF-kappa-B signaling pathway.
Synonyms:	HIP3RP; HIP14L
Note:	Immunogen Sequence Homology: Pig: 100%; Rat: 100%; Human: 100%; Mouse: 100%; Guinea pig: 100%; Dog: 93%; Horse: 93%; Rabbit: 93%; Bovine: 91%; Zebrafish: 91%; Yeast: 83%
Protein Families:	Transmembrane

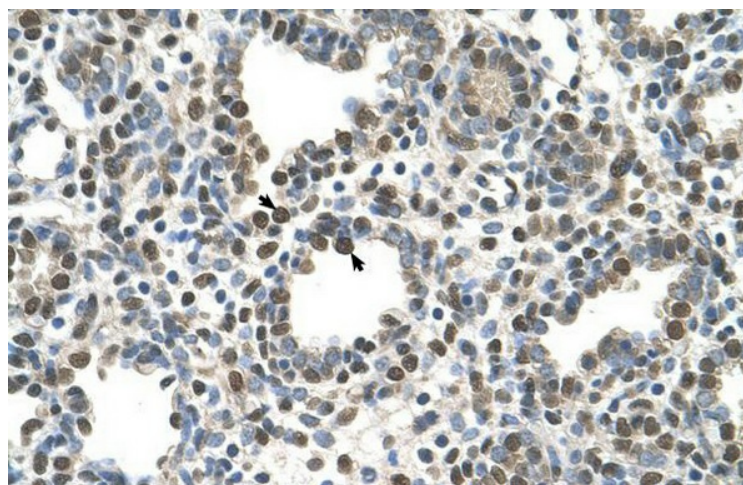


[View online »](#)

Product images:



WB Suggested Anti-ZDHHC13 Antibody Titration: 1.25 ug/ml; Positive Control: Jurkat cell lysate



Human Lung