

Product datasheet for **TA335274**

TRPM2 Rabbit Polyclonal Antibody

Product data:

Product Type:	Primary Antibodies
Applications:	IHC, WB
Recommended Dilution:	WB, IHC
Reactivity:	Human
Host:	Rabbit
Isotype:	IgG
Clonality:	Polyclonal
Immunogen:	The immunogen for anti-TRPM2 antibody: synthetic peptide directed towards the N terminal of human TRPM2. Synthetic peptide located within the following region: VAIQALLKASRSQDHFHGHENWDHQLKLAVAWNRVDIARSEIFMDEWQWK
Formulation:	Liquid. Purified antibody supplied in 1x PBS buffer with 0.09% (w/v) sodium azide and 2% sucrose. <i>Note that this product is shipped as lyophilized powder to China customers.</i>
Purification:	Affinity Purified
Conjugation:	Unconjugated
Storage:	Store at -20°C as received.
Stability:	Stable for 12 months from date of receipt.
Predicted Protein Size:	171 kDa
Gene Name:	transient receptor potential cation channel subfamily M member 2
Database Link:	NP_003298 Entrez Gene 7226 Human O94759



[View online »](#)

Background:

TRPM2 is a calcium-permeable cation channel that is regulated by free intracellular ADP-ribose. The encoded protein is activated by oxidative stress and confers susceptibility to cell death. The protein encoded by this gene is a calcium-permeable cation channel that is regulated by free intracellular ADP-ribose. The encoded protein is activated by oxidative stress and confers susceptibility to cell death. Several alternatively spliced transcript variants of this gene have been described, but their full-length nature is not known. Publication Note: This RefSeq record includes a subset of the publications that are available for this gene. Please see the Entrez Gene record to access additional publications.

Synonyms:

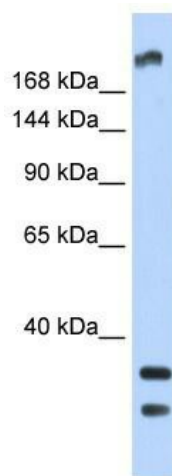
EREG1; KNP3; LTRPC2; NUDT9H; NUDT9L1; TRPC7

Note:

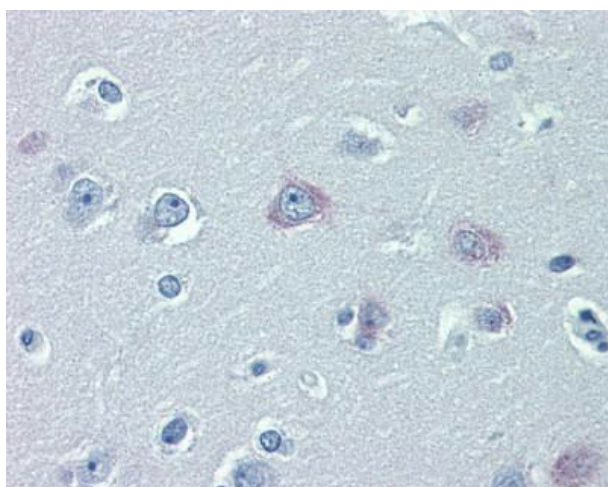
Immunogen Sequence Homology: Rat: 100%; Human: 100%; Mouse: 100%; Horse: 93%; Bovine: 93%; Pig: 88%; Guinea pig: 88%; Dog: 86%

Protein Families:

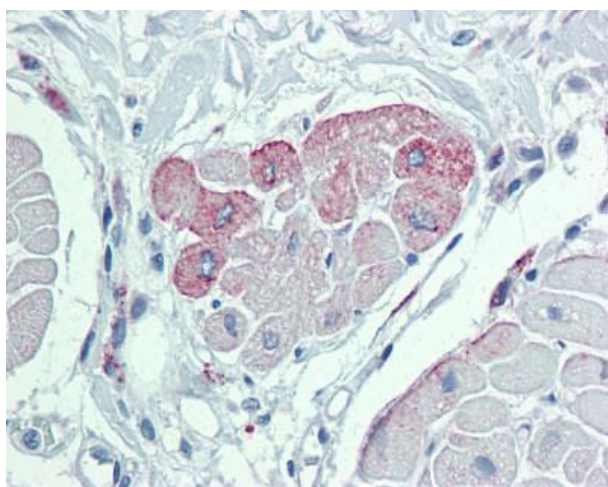
Druggable Genome, Ion Channels: Transient receptor potential, Transmembrane

Product images:

TRPM2 antibody - N-terminal region validated by WB using Fetal Brain Lysate at 1 ug/ml.



Immunohistochemistry with human LCL and mouse brains incubated for 5 minutes in CDP-Star for 5 minutes tissue



Immunohistochemistry with human LCL and mouse brains incubated for 5 minutes in CDP-Star for 5 minutes tissue