

## Product datasheet for **TA335273**

### PTGIS Rabbit Polyclonal Antibody

#### Product data:

Product Type:	Primary Antibodies
Applications:	WB
Recommended Dilution:	WB
Reactivity:	Human
Host:	Rabbit
Isotype:	IgG
Clonality:	Polyclonal
Immunogen:	The immunogen for anti-PTGIS antibody: synthetic peptide directed towards the middle region of human PTGIS. Synthetic peptide located within the following region: EITYDPEVFKYNRFLNPDGSEKKDFYKDGKRLKNYNMPWGAGHNNHCLGRS
Formulation:	Liquid. Purified antibody supplied in 1x PBS buffer with 0.09% (w/v) sodium azide and 2% sucrose. <i>Note that this product is shipped as lyophilized powder to China customers.</i>
Purification:	Affinity Purified
Conjugation:	Unconjugated
Storage:	Store at -20°C as received.
Stability:	Stable for 12 months from date of receipt.
Predicted Protein Size:	57 kDa
Gene Name:	prostaglandin I2 (prostacyclin) synthase
Database Link:	<a href="#">NP_000952</a> <a href="#">Entrez Gene 5740 Human</a> <a href="#">Q16647</a>



[View online »](#)

**Background:**

PTGIS is a member of the cytochrome P450 superfamily of enzymes. The cytochrome P450 proteins are monooxygenases which catalyze many reactions involved in drug metabolism and synthesis of cholesterol, steroids and other lipids. However, this protein is considered a member of the cytochrome P450 superfamily on the basis of sequence similarity rather than functional similarity. This endoplasmic reticulum membrane protein catalyzes the conversion of prostglandin H2 to prostacyclin (prostaglandin I2), a potent vasodilator and inhibitor of platelet aggregation. An imbalance of prostacyclin and its physiological antagonist thromboxane A2 contribute to the development of myocardial infarction, stroke, and atherosclerosis. This gene encodes a member of the cytochrome P450 superfamily of enzymes. The cytochrome P450 proteins are monooxygenases which catalyze many reactions involved in drug metabolism and synthesis of cholesterol, steroids and other lipids. However, this protein is considered a member of the cytochrome P450 superfamily on the basis of sequence similarity rather than functional similarity. This endoplasmic reticulum membrane protein catalyzes the conversion of prostglandin H2 to prostacyclin (prostaglandin I2), a potent vasodilator and inhibitor of platelet aggregation. An imbalance of prostacyclin and its physiological antagonist thromboxane A2 contribute to the development of myocardial infarction, stroke, and atherosclerosis. Publication Note: This RefSeq record includes a subset of the publications that are available for this gene. Please see the Entrez Gene record to access additional publications.

**Synonyms:**

CYP8; CYP8A1; PGIS; PTGI

**Note:**

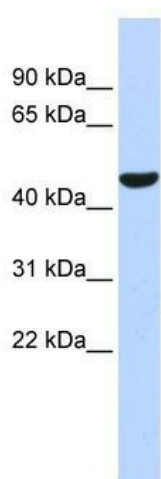
Immunogen Sequence Homology: Dog: 100%; Rat: 100%; Human: 100%; Mouse: 100%; Bovine: 100%; Pig: 93%; Horse: 93%; Guinea pig: 86%; Zebrafish: 85%

**Protein Families:**

Druggable Genome, P450, Transmembrane

**Protein Pathways:**

Arachidonic acid metabolism, Metabolic pathways

**Product images:**

WB Suggested Anti-PTGIS Antibody Titration: 0.2-1 ug/ml; ELISA Titer: 1: 312500; Positive Control: Human brain