

Product datasheet for **TA335272**

PRRG2 Rabbit Polyclonal Antibody

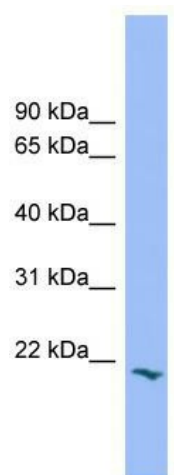
Product data:

Product Type:	Primary Antibodies
Applications:	WB
Recommended Dilution:	WB
Reactivity:	Human
Host:	Rabbit
Isotype:	IgG
Clonality:	Polyclonal
Immunogen:	The immunogen for anti-PRRG2 antibody: synthetic peptide directed towards the middle region of human PRRG2. Synthetic peptide located within the following region: RCSWEEAREYFEDNLTLETFWESYIYNGKGGRRVDVASLAVGLTGGILL
Formulation:	Liquid. Purified antibody supplied in 1x PBS buffer with 0.09% (w/v) sodium azide and 2% sucrose.
Purification:	Affinity Purified
Conjugation:	Unconjugated
Storage:	Store at -20°C as received.
Stability:	Stable for 12 months from date of receipt.
Predicted Protein Size:	22 kDa
Gene Name:	proline rich and Gla domain 2
Database Link:	NP_000942 Entrez Gene 5639 Human O14669
Background:	The function of this protein remains unknown.
Synonyms:	PRGP2
Note:	Immunogen Sequence Homology: Dog: 100%; Pig: 100%; Rat: 100%; Human: 100%; Mouse: 100%; Horse: 93%; Bovine: 86%; Guinea pig: 83%
Protein Families:	Transmembrane



[View online »](#)

Product images:



WB Suggested Anti-PRRG2 Antibody Titration: 0.2-1 ug/ml; Positive Control: Hela cell lysate