

Product datasheet for **TA335269**

PPIC Rabbit Polyclonal Antibody

Product data:

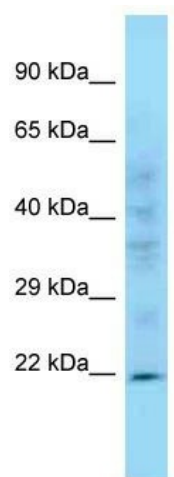
Product Type:	Primary Antibodies
Applications:	WB
Recommended Dilution:	WB
Reactivity:	Mouse
Host:	Rabbit
Isotype:	IgG
Clonality:	Polyclonal
Immunogen:	The immunogen for anti-Ppic antibody is: synthetic peptide directed towards the C-terminal region of Ppic. Synthetic peptide located within the following region: VFGKVLDMGMTVVHSIELQATDGHDRPLTDCTIVNSGKIDVKTPFVVEVP
Formulation:	Liquid. Purified antibody supplied in 1x PBS buffer with 0.09% (w/v) sodium azide and 2% sucrose. <i>Note that this product is shipped as lyophilized powder to China customers.</i>
Purification:	Affinity Purified
Conjugation:	Unconjugated
Storage:	Store at -20°C as received.
Stability:	Stable for 12 months from date of receipt.
Predicted Protein Size:	23 kDa
Gene Name:	peptidylprolyl isomerase C
Database Link:	NP_000934 Entrez Gene 5480 Human P45877
Background:	PPIases accelerate the folding of proteins. It catalyzes the cis-trans isomerization of proline imidic peptide bonds in oligopeptides.
Synonyms:	CYPC
Note:	Immunogen Sequence Homology: Human: 100%; Dog: 93%; Pig: 93%; Rat: 93%; Horse: 93%; Mouse: 93%; Bovine: 93%; Rabbit: 93%; Guinea pig: 93%



[View online »](#)

Protein Families: Transmembrane

Product images:



WB Suggested Anti-Ppic Antibody; Titration: 1.0 ug/ml; Positive Control: Mouse Heart