

Product datasheet for **TA335267**

Cyclophilin B (PPIB) Rabbit Polyclonal Antibody

Product data:

Product Type:	Primary Antibodies
Applications:	IHC, WB
Recommended Dilution:	WB, IHC
Reactivity:	Human
Host:	Rabbit
Isotype:	IgG
Clonality:	Polyclonal
Immunogen:	The immunogen for anti-PPIB antibody: synthetic peptide directed towards the middle region of human PPIB. Synthetic peptide located within the following region: FITTVKTAWLDGKHVFGKVLGMEVVRKVESTKTDSRDKPLKDVIADC
Formulation:	Liquid. Purified antibody supplied in 1x PBS buffer with 0.09% (w/v) sodium azide and 2% sucrose. <i>Note that this product is shipped as lyophilized powder to China customers.</i>
Purification:	Protein A purified
Conjugation:	Unconjugated
Storage:	Store at -20°C as received.
Stability:	Stable for 12 months from date of receipt.
Predicted Protein Size:	24 kDa
Gene Name:	peptidylprolyl isomerase B
Database Link:	NP_000933 Entrez Gene 5479 Human P23284



[View online »](#)

Background:

PPIB is a cyclosporine-binding protein and is mainly located within the endoplasmic reticulum. It is associated with the secretory pathway and released in biological fluids. This protein can bind to cells derived from T- and B-lymphocytes, and may regulate cyclosporine A-mediated immunosuppression. Western blots using two different antibodies against two unique regions of this protein target confirm the same apparent molecular weight in our tests. The protein encoded by this gene is a cyclosporine-binding protein and is mainly located within the endoplasmic reticulum. It is associated with the secretory pathway and released in biological fluids. This protein can bind to cells derived from T- and B-lymphocytes, and may regulate cyclosporine A-mediated immunosuppression.

Synonyms:

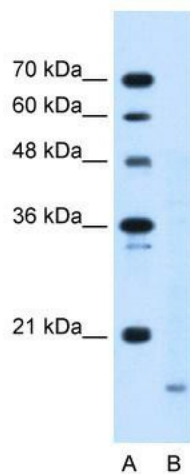
CYP-S1; CYPB; HEL-S-39; OI9; SCYLP

Note:

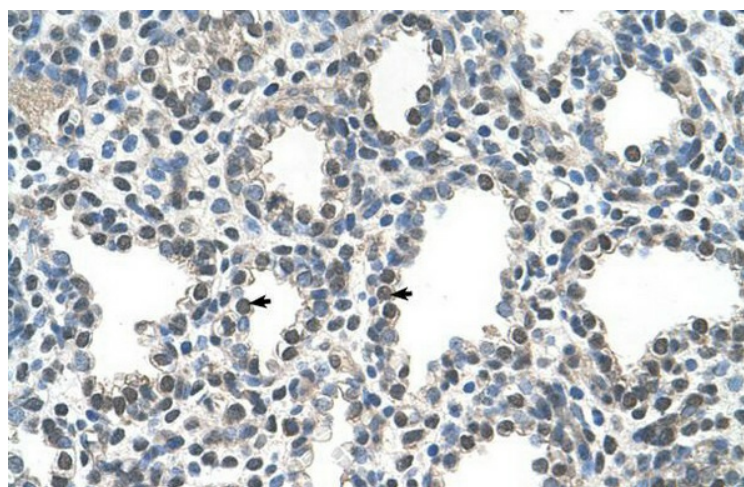
Immunogen Sequence Homology: Dog: 100%; Pig: 100%; Human: 100%; Mouse: 100%; Rabbit: 100%; Guinea pig: 100%; Rat: 93%; Horse: 93%; Bovine: 93%; Sheep: 86%; Zebrafish: 79%

Protein Families:

Druggable Genome, Transmembrane

Product images:

WB Suggested Anti-PPIB Antibody Titration: 5.0 ug/ml; Positive Control: HepG2 cell lysate



Human Lung