

Product datasheet for **TA335266**

Cyclophilin B (PPIB) Rabbit Polyclonal Antibody

Product data:

Product Type:	Primary Antibodies
Applications:	WB
Recommended Dilution:	WB
Reactivity:	Human
Host:	Rabbit
Isotype:	IgG
Clonality:	Polyclonal
Immunogen:	The immunogen for anti-PPIB antibody: synthetic peptide directed towards the N terminal of human PPIB. Synthetic peptide located within the following region: KKKGGPKVTVKVYFDLRIGDEDVGRVIFGLFGKTVPKTVDNFVALATGEKG
Formulation:	Liquid. Purified antibody supplied in 1x PBS buffer with 0.09% (w/v) sodium azide and 2% sucrose. <i>Note that this product is shipped as lyophilized powder to China customers.</i>
Purification:	Affinity Purified
Conjugation:	Unconjugated
Storage:	Store at -20°C as received.
Stability:	Stable for 12 months from date of receipt.
Predicted Protein Size:	21 kDa
Gene Name:	peptidylprolyl isomerase B
Database Link:	NP_000933 Entrez Gene 5479 Human P23284



[View online »](#)

Background:

PPIB is a cyclosporine-binding protein and is mainly located within the endoplasmic reticulum. It is associated with the secretory pathway and released in biological fluids. This protein can bind to cells derived from T- and B-lymphocytes, and may regulate cyclosporine A-mediated immunosuppression. The protein encoded by this gene is a cyclosporine-binding protein and is mainly located within the endoplasmic reticulum. It is associated with the secretory pathway and released in biological fluids. This protein can bind to cells derived from T- and B-lymphocytes, and may regulate cyclosporine A-mediated immunosuppression. Publication Note: This RefSeq record includes a subset of the publications that are available for this gene. Please see the Entrez Gene record to access additional publications.

Synonyms:

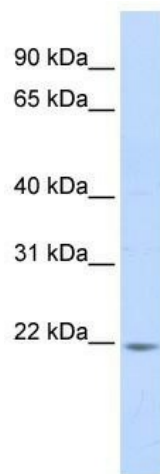
CYP-S1; CYPB; HEL-S-39; OI9; SCYLP

Note:

Immunogen Sequence Homology: Dog: 100%; Pig: 100%; Rat: 100%; Horse: 100%; Human: 100%; Mouse: 100%; Bovine: 100%; Rabbit: 100%; Guinea pig: 100%; Yeast: 86%

Protein Families:

Druggable Genome, Transmembrane

Product images:

WB Suggested Anti-PPIB Antibody Titration: 0.2-1 ug/ml; ELISA Titer: 1: 1562500; Positive Control: Human Liver