

## Product datasheet for **TA335263**

### PDE3B Rabbit Polyclonal Antibody

#### Product data:

Product Type:	Primary Antibodies
Applications:	WB
Recommended Dilution:	WB
Reactivity:	Human
Host:	Rabbit
Isotype:	IgG
Clonality:	Polyclonal
Immunogen:	The immunogen for anti-PDE3B antibody: synthetic peptide directed towards the middle region of human PDE3B. Synthetic peptide located within the following region: SRPEYNFLLHLDHVEFKRFRFLVIEAILATDLKKHFDFLAEFNAKANDVN
Formulation:	Liquid. Purified antibody supplied in 1x PBS buffer with 0.09% (w/v) sodium azide and 2% sucrose. <i>Note that this product is shipped as lyophilized powder to China customers.</i>
Purification:	Affinity Purified
Conjugation:	Unconjugated
Storage:	Store at -20°C as received.
Stability:	Stable for 12 months from date of receipt.
Predicted Protein Size:	124 kDa
Gene Name:	phosphodiesterase 3B
Database Link:	<a href="#">NP_000913</a> <a href="#">Entrez Gene 5140 Human</a> <a href="#">Q13370</a>
Background:	PDE3B belongs to the cyclic nucleotide phosphodiesterase family. It may play a role in fat metabolism.
Synonyms:	cGIPDE1; HcGIP1
Note:	Immunogen Sequence Homology: Human: 100%; Dog: 93%; Pig: 93%; Rat: 93%; Horse: 93%; Rabbit: 93%; Mouse: 86%; Bovine: 86%; Guinea pig: 86%; Zebrafish: 79%

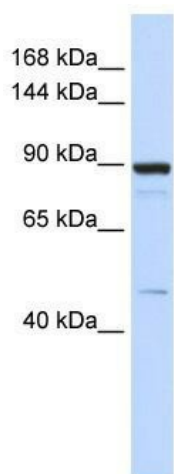


[View online »](#)

Protein Families: Druggable Genome, Transmembrane

Protein Pathways: Insulin signaling pathway, Progesterone-mediated oocyte maturation, Purine metabolism

### Product images:



WB Suggested Anti-PDE3B Antibody Titration: 0.2-1 ug/ml; ELISA Titer: 1: 1562500; Positive Control: 293T cell lysate