

Product datasheet for **TA335262**

PDE3A Rabbit Polyclonal Antibody

Product data:

Product Type:	Primary Antibodies
Applications:	WB
Recommended Dilution:	WB
Reactivity:	Human
Host:	Rabbit
Isotype:	IgG
Clonality:	Polyclonal
Immunogen:	The immunogen for anti-PDE3A antibody: synthetic peptide directed towards the N terminal of human PDE3A. Synthetic peptide located within the following region: LLADPSLPPNVCTSLRAVSNLLSTQLTFQAIHKPRVNPVTSLSENYTCSD
Formulation:	Liquid. Purified antibody supplied in 1x PBS buffer with 0.09% (w/v) sodium azide and 2% sucrose. <i>Note that this product is shipped as lyophilized powder to China customers.</i>
Purification:	Affinity Purified
Conjugation:	Unconjugated
Storage:	Store at -20°C as received.
Stability:	Stable for 12 months from date of receipt.
Predicted Protein Size:	125 kDa
Gene Name:	phosphodiesterase 3A
Database Link:	NP_000912 Entrez Gene 5139 Human Q14432
Background:	PDE3A belongs to the cyclic nucleotide phosphodiesterase family. It hydrolyzes both cyclic AMP (cAMP) and cyclic GMP (cGMP).
Synonyms:	CGI-PDE; CGI-PDE-A; CGI-PDE A
Note:	Immunogen Sequence Homology: Human: 100%; Horse: 86%; Dog: 79%; Pig: 79%; Rat: 79%; Bovine: 79%

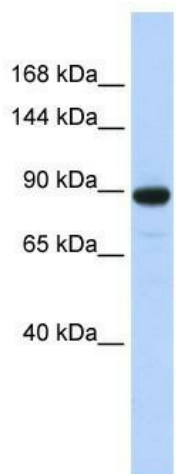


[View online »](#)

Protein Families: Druggable Genome, Transmembrane

Protein Pathways: Insulin signaling pathway, Progesterone-mediated oocyte maturation, Purine metabolism

Product images:



WB Suggested Anti-PDE3A Antibody Titration: 0.2-1 ug/ml; ELISA Titer: 1: 1562500; Positive Control: MCF7 cell lysate