

## Product datasheet for **TA335260**

### GGCX Rabbit Polyclonal Antibody

#### Product data:

|                         |  |
|-------------------------|--|
| Product Type:           | Primary Antibodies   |
| Applications:           | IHC, WB  |
| Recommended Dilution:   | WB   |
| Reactivity:             | Human  |
| Host:                   | Rabbit   |
| Isotype:                | IgG  |
| Clonality:              | Polyclonal   |
| Immunogen:              | The immunogen for anti-GGCX antibody: synthetic peptide directed towards the middle region of human GGCX. Synthetic peptide located within the following region:<br>FLLRKLYVFRSFLMTCISLRNLILGRPSLEQLAQEVTYANLRPF EAVGE |
| Formulation:            | Liquid. Purified antibody supplied in 1x PBS buffer with 0.09% (w/v) sodium azide and 2% sucrose.<br><i>Note that this product is shipped as lyophilized powder to China customers.</i>                                |
| Purification:           | Affinity Purified  |
| Conjugation:            | Unconjugated   |
| Storage:                | Store at -20°C as received.  |
| Stability:              | Stable for 12 months from date of receipt.   |
| Predicted Protein Size: | 87 kDa   |
| Gene Name:              | gamma-glutamyl carboxylase   |
| Database Link:          | <a href="#">NP_000812</a><br><a href="#">Entrez Gene 2677 Human</a><br><a href="#">P38435</a>  |



[View online »](#)

**Background:**

GGCX is an enzyme which catalyzes the posttranslational modification of vitamin K-dependent protein. Many of these vitamin K-dependent proteins are involved in coagulation so the function of the encoded enzyme is essential for hemostasis. Mutations in this gene are associated with vitamin K-dependent coagulation defect and PXE-like disorder with multiple coagulation factor deficiency. Gamma-glutamyl carboxylase accomplishes the posttranslational modification required for the activity of all of the vitamin K-dependent proteins (Wu et al., 1991 [PubMed 1749935]). These include some of the blood coagulation and anticoagulation proteins as well as bone gamma-carboxyglutamic acid (Gla) protein (BGLAP; MIM 112260) and bone matrix protein (MGP; MIM 154870). [supplied by OMIM].  
Publication Note: This RefSeq record includes a subset of the publications that are available for this gene. Please see the Entrez Gene record to access additional publications.

**Synonyms:**

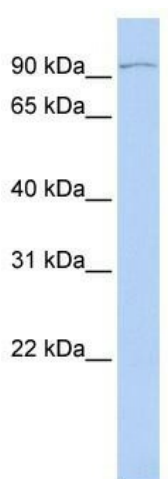
VKCFD1

**Note:**

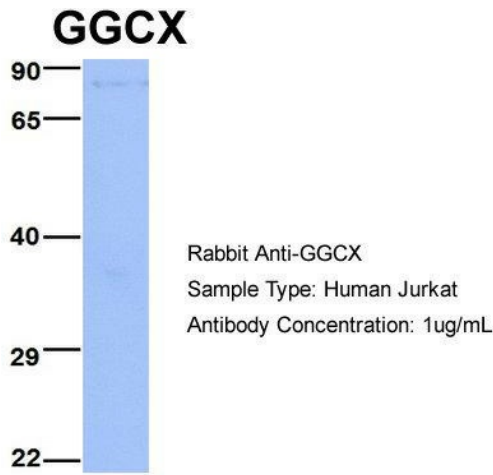
Immunogen Sequence Homology: Dog: 100%; Pig: 100%; Rat: 100%; Horse: 100%; Human: 100%; Mouse: 100%; Sheep: 100%; Bovine: 100%; Rabbit: 100%; Guinea pig: 100%

**Protein Families:**

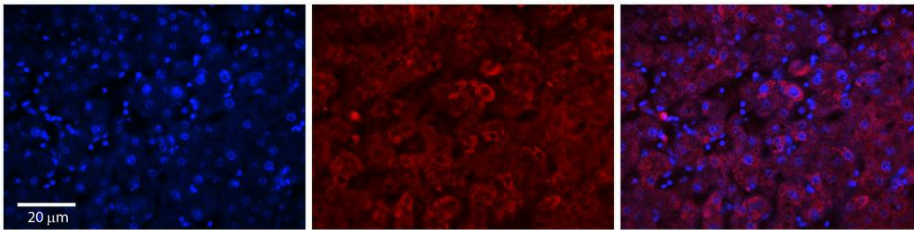
Druggable Genome, Transmembrane

**Product images:**

WB Suggested Anti-GGCX Antibody Titration: 0.2-1 ug/ml; ELISA Titer: 1: 1562500; Positive Control: MCF7 cell lysate. GGCX is strongly supported by BioGPS gene expression data to be expressed in MCF7



Host: Rabbit; Target Name: GGcX; Sample Tissue: Jurkat; Antibody Dilution: 1.0 ug/ml. GGcX is strongly supported by BioGPS gene expression data to be expressed in Human Jurkat cells



Rabbit Anti-GGCX Antibody; Formalin Fixed Paraffin Embedded Tissue: Human Adult Liver; Observed Staining: Cytoplasm in hepatocytes, strong signal, wide tissue distribution; Primary Antibody Concentration: 1: 100; Secondary Antibody: Donkey anti-Rabbit-Cy3