

Product datasheet for **TA335259**

EPO Rabbit Polyclonal Antibody

Product data:

Product Type:	Primary Antibodies
Applications:	WB
Recommended Dilution:	WB
Reactivity:	Human
Host:	Rabbit
Isotype:	IgG
Clonality:	Polyclonal
Immunogen:	The immunogen for anti-EPO antibody: synthetic peptide directed towards the middle region of human EPO. Synthetic peptide located within the following region: KEAISPPDAASAAPLRTITADTFRKLFRVYSNFLRGKLLKLYTGACRTGD
Formulation:	Liquid. Purified antibody supplied in 1x PBS buffer with 0.09% (w/v) sodium azide and 2% sucrose. <i>Note that this product is shipped as lyophilized powder to China customers.</i>
Purification:	Affinity Purified
Conjugation:	Unconjugated
Storage:	Store at -20°C as received.
Stability:	Stable for 12 months from date of receipt.
Predicted Protein Size:	18 kDa
Gene Name:	erythropoietin
Database Link:	NP_000790 Entrez Gene 2056 Human P01588
Background:	This gene is a member of the EPO/TPO family and encodes a secreted, glycosylated cytokine composed of four alpha helical bundles. The protein is found in the plasma and regulates red cell production by promoting erythroid differentiation and initiating hemoglobin synthesis. This protein also has neuroprotective activity against a variety of potential brain injuries and antiapoptotic functions in several tissue types.
Synonyms:	EP; MVCD2



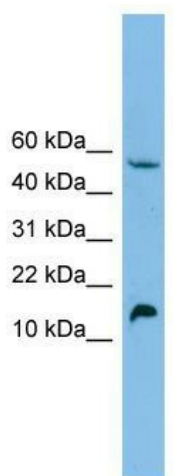
[View online »](#)

Note: Immunogen Sequence Homology: Pig: 100%; Rat: 100%; Horse: 100%; Human: 100%; Mouse: 100%; Rabbit: 100%; Guinea pig: 100%; Dog: 93%; Sheep: 93%; Bovine: 93%

Protein Families: Druggable Genome, ES Cell Differentiation/IPS, Secreted Protein, Transmembrane

Protein Pathways: Cytokine-cytokine receptor interaction, Hematopoietic cell lineage, Jak-STAT signaling pathway

Product images:



WB Suggested Anti-EPO Antibody Titration: 0.2-1 ug/ml; ELISA Titer: 1: 312500; Positive Control: HepG2 cell lysate; EPO is strongly supported by BioGPS gene expression data to be expressed in Human HepG2 cells