

Product datasheet for **TA335258**

M-CSF (CSF1) Rabbit Polyclonal Antibody

Product data:

Product Type:	Primary Antibodies
Applications:	IF, WB
Recommended Dilution:	IF, WB, IHC
Reactivity:	Human
Host:	Rabbit
Isotype:	IgG
Clonality:	Polyclonal
Immunogen:	The immunogen for anti-CSF1 antibody: synthetic peptide directed towards the middle region of human CSF1. Synthetic peptide located within the following region: SGSVLPLGELGRRSTRDRRSPAEPGGPASEGAARPLPRFNSVPLTDTG
Formulation:	Liquid. Purified antibody supplied in 1x PBS buffer with 0.09% (w/v) sodium azide and 2% sucrose.
Purification:	Affinity Purified
Conjugation:	Unconjugated
Storage:	Store at -20°C as received.
Stability:	Stable for 12 months from date of receipt.
Predicted Protein Size:	57 kDa
Gene Name:	colony stimulating factor 1
Database Link:	NP_000748 Entrez Gene 1435 Human P09603
Background:	The protein encoded by this gene is a cytokine that controls the production, differentiation, and function of macrophages. The active form of the protein is found extracellularly as a disulfide-linked homodimer, and is thought to be produced by proteolytic cleavage of membrane-bound precursors. The encoded protein may be involved in development of the placenta. Alternate splicing results in multiple transcript variants. [provided by RefSeq, Sep 2011]
Synonyms:	CSF-1; MCSF



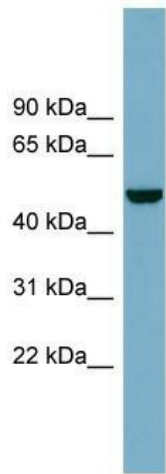
[View online »](#)

Note: Immunogen Sequence Homology: Human: 100%; Rat: 86%; Mouse: 86%; Dog: 85%; Pig: 85%; Guinea pig: 79%

Protein Families: Druggable Genome, ES Cell Differentiation/IPS, Secreted Protein, Transmembrane

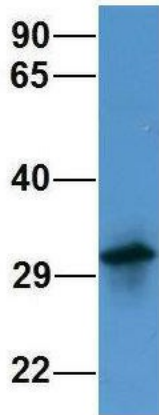
Protein Pathways: Cytokine-cytokine receptor interaction, Hematopoietic cell lineage

Product images:



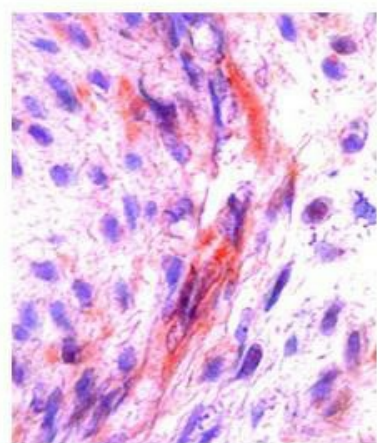
WB Suggested Anti-CSF1 Antibody Titration: 0.2-1 ug/ml; ELISA Titer: 1: 62500; Positive Control: COLO205 cell lysate

CSF1



Rabbit Anti-CSF1
Sample Type: Human 721_B
Antibody Concentration: 1ug/mL

3Human 721_B; Host: Rabbit; Target Name: WT1; Sample Tissue: 721_B; Antibody Dilution: 1.0 ug/ml; CSF1 is strongly supported by BioGPS gene expression data to be expressed in Human 721_B cells



Human Placenta