

Product datasheet for **TA335256**

M-CSF (CSF1) Rabbit Polyclonal Antibody

Product data:

Product Type:	Primary Antibodies
Applications:	WB
Recommended Dilution:	WB
Reactivity:	Human
Host:	Rabbit
Isotype:	IgG
Clonality:	Polyclonal
Immunogen:	The immunogen for anti-CSF1 antibody: synthetic peptide directed towards the N terminal of human CSF1. Synthetic peptide located within the following region: PPTTWLGSLLLLVCLLASRSITEEVSEYCSHMIGSGHLQSLQRLIDSQME
Formulation:	Liquid. Purified antibody supplied in 1x PBS buffer with 0.09% (w/v) sodium azide and 2% sucrose. <i>Note that this product is shipped as lyophilized powder to China customers.</i>
Purification:	Affinity Purified
Conjugation:	Unconjugated
Storage:	Store at -20°C as received.
Stability:	Stable for 12 months from date of receipt.
Predicted Protein Size:	45 kDa
Gene Name:	colony stimulating factor 1
Database Link:	NP_757349 Entrez Gene 1435 Human P09603



[View online »](#)

Background:

CSF1 is a cytokine that controls the production, differentiation, and function of macrophages. The active form of the protein is found extracellularly as a disulfide-linked homodimer, and is thought to be produced by proteolytic cleavage of membrane-bound precursors. CSF1 may be involved in development of the placenta. The protein encoded by this gene is a cytokine that controls the production, differentiation, and function of macrophages. The active form of the protein is found extracellularly as a disulfide-linked homodimer, and is thought to be produced by proteolytic cleavage of membrane-bound precursors. The encoded protein may be involved in development of the placenta. Four transcript variants encoding three different isoforms have been found for this gene.

Synonyms:

CSF-1; MCSF

Note:

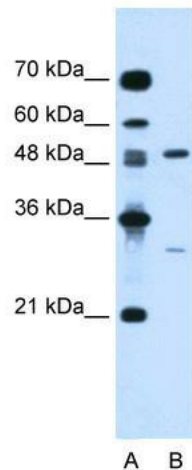
Immunogen Sequence Homology: Human: 100%; Rabbit: 92%; Dog: 85%; Pig: 85%; Rat: 85%; Guinea pig: 85%

Protein Families:

Druggable Genome, ES Cell Differentiation/IPS, Secreted Protein, Transmembrane

Protein Pathways:

Cytokine-cytokine receptor interaction, Hematopoietic cell lineage

Product images:

WB Suggested Anti-CSF1 Antibody Titration: 0.2-1 ug/ml; Positive Control: Jurkat cell lysate