

Product datasheet for **TA335255**

COMT Rabbit Polyclonal Antibody

Product data:

Product Type:	Primary Antibodies
Applications:	WB
Recommended Dilution:	WB
Reactivity:	Human, Rat, Mouse
Host:	Rabbit
Isotype:	IgG
Clonality:	Polyclonal
Immunogen:	The immunogen for anti-COMT antibody: synthetic peptide directed towards the middle region of human COMT. Synthetic peptide located within the following region: PDCAAITQRMVDFAGVKDKVTLVVGASQDIIPQLKKKYDVTLDMMVFLDH
Formulation:	Liquid. Purified antibody supplied in 1x PBS buffer with 0.09% (w/v) sodium azide and 2% sucrose. <i>Note that this product is shipped as lyophilized powder to China customers.</i>
Purification:	Affinity Purified
Conjugation:	Unconjugated
Storage:	Store at -20°C as received.
Stability:	Stable for 12 months from date of receipt.
Predicted Protein Size:	30 kDa
Gene Name:	catechol-O-methyltransferase
Database Link:	NP_000745 Entrez Gene 12846 Mouse Entrez Gene 24267 Rat Entrez Gene 1312 Human P21964



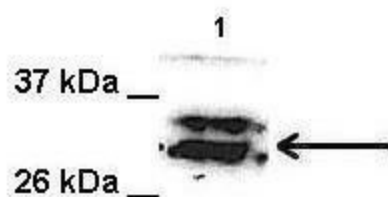
[View online »](#)

Background:	Catechol-O-methyltransferase catalyzes the transfer of a methyl group from S-adenosylmethionine to catecholamines, including the neurotransmitters dopamine, epinephrine, and norepinephrine. This O-methylation results in one of the major degradative pathways of the catecholamine transmitters. In addition to its role in the metabolism of endogenous substances, COMT is important in the metabolism of catechol drugs used in the treatment of hypertension, asthma, and Parkinson disease. COMT is found in two forms in tissues, a soluble form (S-COMT) and a membrane-bound form (MB-COMT). The differences between S-COMT and MB-COMT reside within the N-termini. Several transcript variants are formed through the use of alternative translation initiation sites and promoters. [provided by RefSeq, Sep 2008]
Synonyms:	HEL-S-98n
Note:	Immunogen Sequence Homology: Pig: 100%; Horse: 100%; Human: 100%; Bovine: 100%; Rat: 93%; Mouse: 93%; Guinea pig: 92%; Rabbit: 86%; Dog: 79%
Protein Families:	Druggable Genome, Transmembrane
Protein Pathways:	Metabolic pathways, Tyrosine metabolism

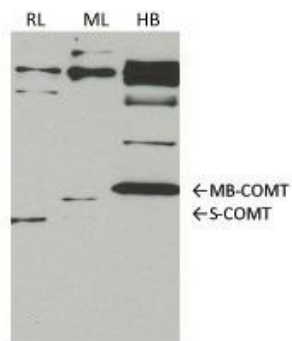
Product images:

WB Suggested Anti-COMT Antibody Titration: 0.2-1 ug/ml; ELISA Titer: 1: 1562500; Positive Control: Human Stomach

COMT



Lanes: 1. 100 ug Human lung microsome lysate;
 Primary Antibody Dilution: 1: 1000; Secondary
 Antibody: Secondary Antibody Dilution: 1: 10000;
 Gene Name: COMT; Submitted by: Jing Peng, Fox
 Chase Cancer Center;



COMT antibody - middle region validated by WB
 using rat liver, mouse lung, human brain at 1:
 1000.

Legend

RL-- rat liver (10ug)
 ML-- mouse liver (10ug)
 HB-- human brain (15ug)