

## Product datasheet for **TA335254**

### ATP4B Rabbit Polyclonal Antibody

#### Product data:

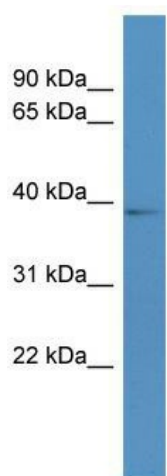
Product Type:	Primary Antibodies
Applications:	WB
Recommended Dilution:	WB
Reactivity:	Rat
Host:	Rabbit
Isotype:	IgG
Clonality:	Polyclonal
Immunogen:	The immunogen for anti-Atp4b antibody: synthetic peptide corresponding to a region of Rat. Synthetic peptide located within the following region: QPHYSNPLVAAKFLNVPKNTQVLIVCKIMADHVTFDNPDPYEGKVEFKL
Formulation:	Liquid. Purified antibody supplied in 1x PBS buffer with 0.09% (w/v) sodium azide and 2% sucrose. <i>Note that this product is shipped as lyophilized powder to China customers.</i>
Purification:	Affinity Purified
Conjugation:	Unconjugated
Storage:	Store at -20°C as received.
Stability:	Stable for 12 months from date of receipt.
Predicted Protein Size:	34 kDa
Gene Name:	ATPase H <sup>+</sup> /K <sup>+</sup> transporting beta subunit
Database Link:	<a href="#">NP_000696</a> <a href="#">Entrez Gene 24217 Rat</a> <a href="#">P51164</a>
Background:	The function of Atp4b remains unknown.
Synonyms:	ATP6B
Note:	Immunogen Sequence Homology: Human: 100%; Mouse: 100%; Dog: 93%; Pig: 93%; Rat: 93%; Horse: 93%; Bovine: 93%; Rabbit: 93%; Guinea pig: 93%
Protein Families:	Druggable Genome, Transmembrane



[View online »](#)

Protein Pathways: Oxidative phosphorylation

### Product images:



WB Suggested Anti-Atp4b Antibody Titration: 0.2-1 ug/ml; ELISA Titer: 1: 312500; Positive Control: Rat Lung