

Product datasheet for **TA335249**

TRP1 (TYRP1) Rabbit Polyclonal Antibody

Product data:

Product Type:	Primary Antibodies
Applications:	IHC, WB
Recommended Dilution:	WB, IHC
Reactivity:	Mouse, Human
Host:	Rabbit
Isotype:	IgG
Clonality:	Polyclonal
Immunogen:	The immunogen for anti-TYRP1 antibody: synthetic peptide directed towards the middle region of human TYRP1. Synthetic peptide located within the following region: NDPIFVLLHTFTDAVFDEWLRRYNADISTFPLENAPIGHNRRQYNMVPFWP
Formulation:	Liquid. Purified antibody supplied in 1x PBS buffer with 0.09% (w/v) sodium azide and 2% sucrose. <i>Note that this product is shipped as lyophilized powder to China customers.</i>
Purification:	Affinity Purified
Conjugation:	Unconjugated
Storage:	Store at -20°C as received.
Stability:	Stable for 12 months from date of receipt.
Predicted Protein Size:	61 kDa
Gene Name:	tyrosinase related protein 1
Database Link:	NP_000541 Entrez Gene 22178 Mouse Entrez Gene 7306 Human P17643
Background:	TYRP1 catalyses the oxidation of 5,6-dihydroxyindole-2-carboxylic acid (DHICA) into indole-5,6-quinone-2-carboxylic acid. It may regulate or influence the type of melanin synthesized.
Synonyms:	b-PROTEIN; CAS2; CATB; GP75; OCA3; TRP; TRP1; TYRP
Note:	Immunogen Sequence Homology: Dog: 100%; Pig: 100%; Rat: 100%; Goat: 100%; Horse: 100%; Human: 100%; Mouse: 100%; Sheep: 100%; Rabbit: 100%; Guinea pig: 100%; Bovine: 93%; Zebrafish: 86%



[View online »](#)

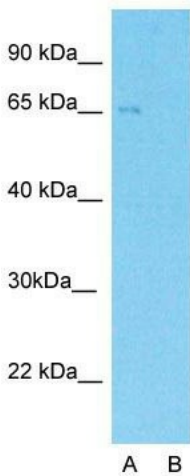
Protein Families: Druggable Genome, Transmembrane

Protein Pathways: Melanogenesis, Metabolic pathways, Tyrosine metabolism

Product images:



WB Suggested Anti-TYRP1 Antibody Titration: 1 ug/ml; Positive Control: 721_B cell lysate



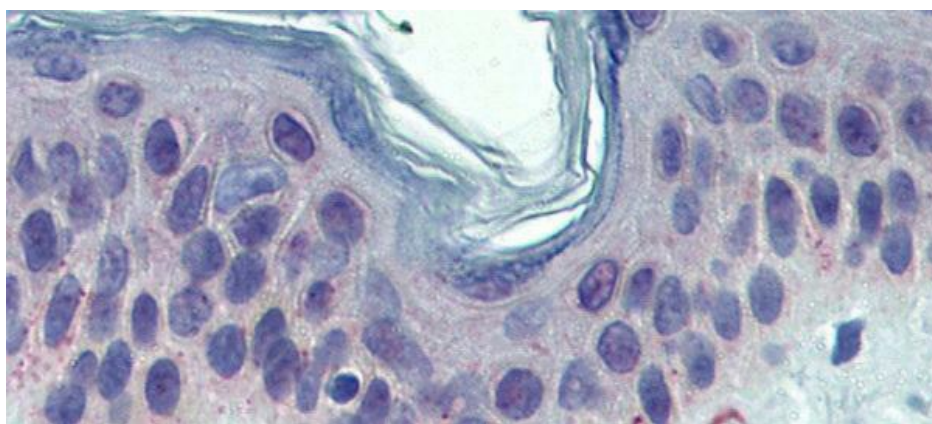
Anti-TYRP1 Western Blot & Peptide Block Validation

Lysate: 721_B Cell

Lane A: Primary Antibody
Lane B: Primary Antibody + Blocking Peptide

Primary Antibody Concentration: 1.0µg/ml
Peptide Concentration: 5.0µg/ml
Lysate Quantity: 25µg/lane
Gel Concentration: 12%

Host: Rabbit; Target Name: TYRP1; Sample Tissue: Human 721_B; Lane A: Primary Antibody; Lane B: Primary Antibody + Blocking Peptide; Primary Antibody Concentration: 1 ug/ml; Peptide Concentration: 5.0 ug/ml; Lysate Quantity: 25 ug/lane/lane; Gel Concentra



Rabbit Anti-TYRP1 Antibody; Paraffin Embedded Tissue: Human Skin; Antibody Concentration: 5 ug/ml