

Product datasheet for **TA335248**

TRP1 (TYRP1) Rabbit Polyclonal Antibody

Product data:

Product Type:	Primary Antibodies
Applications:	WB
Recommended Dilution:	WB
Reactivity:	Rat
Host:	Rabbit
Isotype:	IgG
Clonality:	Polyclonal
Immunogen:	The immunogen for anti-Tyrp1 antibody: synthetic peptide corresponding to a region of Rat. Synthetic peptide located within the following region: AHLFLNGTGGQTHLSPNDPIFVLLHTFTDAVFDEWLRRYNADISTFPLEN
Formulation:	Liquid. Purified antibody supplied in 1x PBS buffer with 0.09% (w/v) sodium azide and 2% sucrose. <i>Note that this product is shipped as lyophilized powder to China customers.</i>
Purification:	Affinity Purified
Conjugation:	Unconjugated
Storage:	Store at -20°C as received.
Stability:	Stable for 12 months from date of receipt.
Predicted Protein Size:	61 kDa
Gene Name:	tyrosinase related protein 1
Database Link:	NP_000541 Entrez Gene 298182 Rat P17643
Background:	The function of this protein remains unknown.
Synonyms:	b-PROTEIN; CAS2; CATB; GP75; OCA3; TRP; TRP1; TYRP
Note:	Immunogen Sequence Homology: Dog: 100%; Pig: 100%; Rat: 100%; Goat: 100%; Horse: 100%; Human: 100%; Mouse: 100%; Sheep: 100%; Bovine: 100%; Rabbit: 100%; Zebrafish: 100%; Guinea pig: 100%

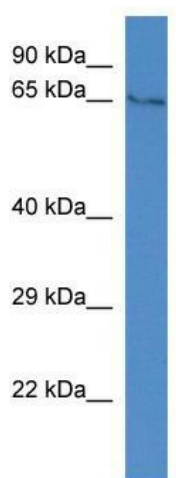


[View online »](#)

Protein Families: Druggable Genome, Transmembrane

Protein Pathways: Melanogenesis, Metabolic pathways, Tyrosine metabolism

Product images:



WB Suggested Anti-Tyrp1 Antibody; Titration: 1.0 ug/ml; Positive Control: Rat Brain