

## Product datasheet for **TA335247**

### TRP1 (TYRP1) Rabbit Polyclonal Antibody

#### Product data:

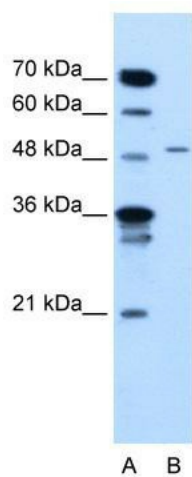
Product Type:	Primary Antibodies
Applications:	WB
Recommended Dilution:	WB
Reactivity:	Mouse, Human
Host:	Rabbit
Isotype:	IgG
Clonality:	Polyclonal
Immunogen:	The immunogen for anti-TYRP1 antibody: synthetic peptide directed towards the N terminal of human TYRP1. Synthetic peptide located within the following region: AKRTHPLFVIATRREEILGPDGNTQPENISIIYNYFWTHYYSVKKTF
Formulation:	Liquid. Purified antibody supplied in 1x PBS buffer with 0.09% (w/v) sodium azide and 2% sucrose.
Purification:	Protein A purified
Conjugation:	Unconjugated
Storage:	Store at -20°C as received.
Stability:	Stable for 12 months from date of receipt.
Predicted Protein Size:	59 kDa
Gene Name:	tyrosinase related protein 1
Database Link:	<a href="#">NP_000541</a> <a href="#">Entrez Gene 22178 Mouse</a> <a href="#">Entrez Gene 7306 Human</a> <a href="#">P17643</a>
Background:	TYRP1 catalyses the oxidation of 5,6-dihydroxyindole-2-carboxylic acid (DHICA) into indole-5,6-quinone-2-carboxylic acid. It may regulate or influence the type of melanin synthesized.
Synonyms:	b-PROTEIN; CAS2; CATB; GP75; OCA3; TRP; TRP1; TYRP
Note:	Immunogen Sequence Homology: Dog: 100%; Pig: 100%; Goat: 100%; Human: 100%; Mouse: 100%; Sheep: 100%; Bovine: 100%; Rabbit: 100%; Rat: 93%; Guinea pig: 93%; Horse: 86%
Protein Families:	Druggable Genome, Transmembrane



[View online »](#)

Protein Pathways: Melanogenesis, Metabolic pathways, Tyrosine metabolism

### Product images:



WB Suggested Anti-TYRP1 Antibody Titration: 2.5 ug/ml; Positive Control: Jurkat cell lysate