

## Product datasheet for **TA335245**

### ApoER2 Rabbit Antibody

#### Product data:

Product Type:	Primary Antibodies
Reactivity:	Mouse
Host:	Rabbit
Isotype:	IgG
Immunogen:	The immunogen for anti-Lrp8 antibody: synthetic peptide corresponding to a region of Mouse. Synthetic peptide located within the following region: NRKMLIFSTDFLSHPFGVAVFEDKVFWTDLNEAIFSANRLNGLEIAILA
Formulation:	Shipped as lyophilized powder. Purified antibody supplied in 1x PBS buffer with 0.09% (w/v) sodium azide and 2% sucrose. <i>Note that this product is shipped as lyophilized powder to China customers.</i>
Purification:	Affinity Purified
Conjugation:	Unconjugated
Storage:	Store at -20°C as received.
Stability:	Stable for 12 months from date of receipt.
Predicted Protein Size:	110 kDa
Database Link:	<a href="#">NP_059992</a> <a href="#">Entrez Gene 16975 Mouse</a>
Background:	Lrp8 is the cell surface receptor for Reelin (RELN) and apolipoprotein E (apoE)-containing ligands. LRP8 participates in transmitting the extracellular Reelin signal to intracellular signaling processes, by binding to DAB1 on its cytoplasmic tail. Reelin acts via both the VLDL receptor (VLDLR) and LRP8 to regulate DAB1 tyrosine phosphorylation and microtubule function in neurons. LRP8 has higher affinity for Reelin than VLDLR. LRP8 is thus a key component of the Reelin pathway which governs neuronal layering of the forebrain during embryonic brain development. Lrp8 binds the endoplasmic reticulum resident receptor-associated protein (RAP). Binds dimers of beta 2-glycoprotein I and may be involved in the suppression of platelet aggregation in the vasculature. Lrp8 is highly expressed in the initial segment of the epididymis, where it affects the functional expression of clusterin and phospholipid hydroperoxide glutathione peroxidase (PHGPx), two proteins required for sperm maturation. Lrp8 may also function as an endocytic receptor.



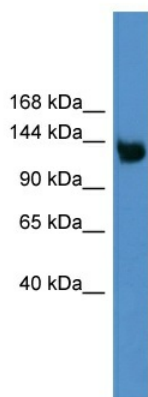
[View online »](#)

**Synonyms:** APOER2; HSZ75190; LRP-8; MCI1

**Note:** Immunogen Sequence Homology: Horse: 100%; Human: 100%; Mouse: 100%; Pig: 93%; Sheep: 93%; Bovine: 93%; Rabbit: 93%; Rat: 92%; Dog: 86%; Guinea pig: 86%; Zebrafish: 79%

**Protein Families:** Druggable Genome, Secreted Protein, Transmembrane

### Product images:



Rabbit Anti-Lrp8 Antibody  
Catalog Number: ARP44306  
Lot Number: QC14226  
Lane: Mouse Liver Lysate

Antibody Titration: 1.0 $\mu$ g/ml  
Gel Concentration: 6-18%

WB Suggested Anti-Lrp8 Antibody Titration: 0.2-1  
ug/ml  
ELISA Titer: 1:312500  
Positive Control: Mouse Liver