

Product datasheet for **TA335243**

C1QB Rabbit Polyclonal Antibody

Product data:

Product Type:	Primary Antibodies
Applications:	IHC, WB
Recommended Dilution:	WB, IHC
Reactivity:	Human
Host:	Rabbit
Isotype:	IgG
Clonality:	Polyclonal
Immunogen:	The immunogen for anti-C1QB antibody: synthetic peptide directed towards the C terminal of human C1QB. Synthetic peptide located within the following region: AYNTFQVTTGGMVLKLEQGENVFLQATDKNSLLGMEGANSIFSGFLLFPD
Formulation:	Liquid. Purified antibody supplied in 1x PBS buffer with 0.09% (w/v) sodium azide and 2% sucrose. <i>Note that this product is shipped as lyophilized powder to China customers.</i>
Purification:	Affinity Purified
Conjugation:	Unconjugated
Storage:	Store at -20°C as received.
Stability:	Stable for 12 months from date of receipt.
Predicted Protein Size:	27 kDa
Gene Name:	complement component 1, q subcomponent, B chain
Database Link:	NP_000482 Entrez Gene 713 Human P02746



[View online »](#)

Background:

C1QB is a major constituent of the human complement subcomponent C1q. C1q associates with C1r and C1s in order to yield the first component of the serum complement system. Deficiency of C1q has been associated with lupus erythematosus and glomerulonephritis. C1q is composed of 18 polypeptide chains: six A-chains, six B-chains, and six C-chains. Each chain contains a collagen-like region located near the N terminus and a C-terminal globular region. The A-, B-, and C-chains are arranged in the order A-C-B on chromosome 1. C1QB is the B-chain polypeptide of human complement subcomponent C1q. This gene encodes a major constituent of the human complement subcomponent C1q. C1q associates with C1r and C1s in order to yield the first component of the serum complement system. Deficiency of C1q has been associated with lupus erythematosus and glomerulonephritis. C1q is composed of 18 polypeptide chains: six A-chains, six B-chains, and six C-chains. Each chain contains a collagen-like region located near the N terminus and a C-terminal globular region. The A-, B-, and C-chains are arranged in the order A-C-B on chromosome 1. This gene encodes the B-chain polypeptide of human complement subcomponent C1q.

Synonyms:

B chain; beta polypeptide; complement component 1; complement component C1q; complement subcomponent C1q chain B; OTTHUMP0000002940; q subcomponent

Note:

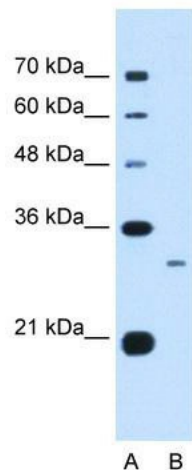
Immunogen Sequence Homology: Human: 100%; Dog: 92%; Horse: 82%

Protein Families:

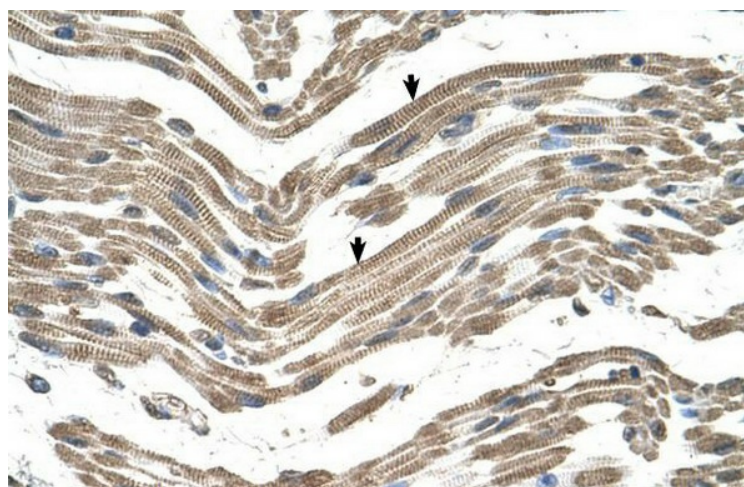
Secreted Protein

Protein Pathways:

Complement and coagulation cascades, Prion diseases, Systemic lupus erythematosus

Product images:

WB Suggested Anti-C1QB Antibody Titration: 0.5 ug/ml; Positive Control: Jurkat cell lysate



Human Muscle