

Product datasheet for **TA335241**

Aquaporin 2 (AQP2) Rabbit Polyclonal Antibody

Product data:

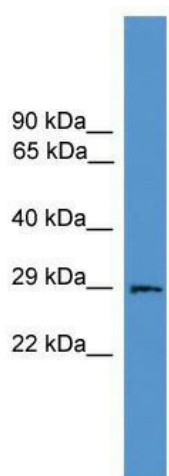
Product Type:	Primary Antibodies
Applications:	WB
Recommended Dilution:	WB
Reactivity:	Human, Mouse
Host:	Rabbit
Isotype:	IgG
Clonality:	Polyclonal
Immunogen:	The immunogen for anti-Aqp2 antibody: synthetic peptide corresponding to a region of Mouse. Synthetic peptide located within the following region: ALSIGFSVTLGHLLGIYFTGCSMNPARSLAPAVVTGKFDDHWVFWIGPLV
Formulation:	Liquid. Purified antibody supplied in 1x PBS buffer with 0.09% (w/v) sodium azide and 2% sucrose. <i>Note that this product is shipped as lyophilized powder to China customers.</i>
Purification:	Affinity Purified
Conjugation:	Unconjugated
Storage:	Store at -20°C as received.
Stability:	Stable for 12 months from date of receipt.
Predicted Protein Size:	29 kDa
Gene Name:	aquaporin 2
Database Link:	NP_000477 Entrez Gene 11827 Mouse Entrez Gene 359 Human P41181
Background:	Aqp2 forms a water-specific channel that provides the plasma membranes of renal collecting duct with high permeability to water, thereby permitting water to move in the direction of an osmotic gradient.
Synonyms:	AQP-CD; WCH-CD
Note:	Immunogen Sequence Homology: Dog: 100%; Pig: 100%; Rat: 100%; Human: 100%; Mouse: 100%; Guinea pig: 100%; Horse: 93%; Sheep: 93%; Bovine: 93%



[View online »](#)

Protein Families: Druggable Genome, Transmembrane

Product images:



WB Suggested Anti-Aqp2 Antibody Titration: 0.2-1ug/mL; ELISA Titer: 1:62500; Positive Control: Mouse Heart