

Product datasheet for **TA335238**

Presenilin 2 (PSEN2) Rabbit Polyclonal Antibody

Product data:

Product Type:	Primary Antibodies
Applications:	WB
Recommended Dilution:	WB
Reactivity:	Rat
Host:	Rabbit
Isotype:	IgG
Clonality:	Polyclonal
Immunogen:	The immunogen for anti-Psen2 antibody is: synthetic peptide directed towards the C-terminal region of Rat Psen2. Synthetic peptide located within the following region: TAQERNEPIFPALYSSAMVWTVGMAKLDPSSQGALQLPYDPEMEEDSYD
Formulation:	Liquid. Purified antibody supplied in 1x PBS buffer with 0.09% (w/v) sodium azide and 2% sucrose. <i>Note that this product is shipped as lyophilized powder to China customers.</i>
Purification:	Affinity Purified
Conjugation:	Unconjugated
Storage:	Store at -20°C as received.
Stability:	Stable for 12 months from date of receipt.
Predicted Protein Size:	49 kDa
Gene Name:	presenilin 2
Database Link:	NP_036618 Entrez Gene 81751 Rat P49810
Background:	This gene mutations in human homolog responsible for chromosome 1-linked familial Alzheimer's disease; expression increased during brain development but decreased in the adult.
Synonyms:	AD3L; AD4; CMD1V; PS2; STM2
Note:	Immunogen Sequence Homology: Dog: 100%; Pig: 100%; Rat: 100%; Horse: 100%; Human: 100%; Mouse: 100%; Bovine: 100%; Guinea pig: 100%; Rabbit: 93%

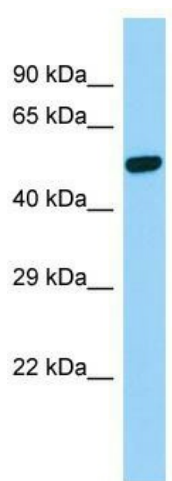


[View online »](#)

Protein Families: Druggable Genome, Protease, Transmembrane

Protein Pathways: Alzheimer's disease, Notch signaling pathway

Product images:



Host: Rabbit; Target name: Psen2; Sample Tissue: Rat Stomach lysates; Antibody Dilution: 1.0ug/mL