

Product datasheet for **TA335237**

Presenilin 2 (PSEN2) Rabbit Polyclonal Antibody

Product data:

Product Type:	Primary Antibodies
Applications:	IHC, WB
Recommended Dilution:	WB, IHC
Reactivity:	Human, Rat, Mouse
Host:	Rabbit
Isotype:	IgG
Clonality:	Polyclonal
Immunogen:	The immunogen for anti-PSEN2 antibody: synthetic peptide directed towards the N terminal of human PSEN2. Synthetic peptide located within the following region: VVVATIKSVRFYTEKNGQLIYTPFTEDTPSVGQRLLNSVLNLTLMISVIV
Formulation:	Liquid. Purified antibody supplied in 1x PBS buffer with 0.09% (w/v) sodium azide and 2% sucrose. <i>Note that this product is shipped as lyophilized powder to China customers.</i>
Purification:	Affinity Purified
Conjugation:	Unconjugated
Storage:	Store at -20°C as received.
Stability:	Stable for 12 months from date of receipt.
Predicted Protein Size:	49 kDa
Gene Name:	presenilin 2
Database Link:	NP_000438 Entrez Gene 19165 Mouse Entrez Gene 81751 Rat Entrez Gene 5664 Human P49810



[View online »](#)

Background:

Alzheimer's disease (AD) patients with an inherited form of the disease carry mutations in the presenilin proteins (PSEN1 or PSEN2) or the amyloid precursor protein (APP). These disease-linked mutations result in increased production of the longer form of amyloid-beta (main component of amyloid deposits found in AD brains). Presenilins are postulated to regulate APP processing through their effects on gamma-secretase, an enzyme that cleaves APP. Also, it is thought that the presenilins are involved in the cleavage of the Notch receptor such that, they either directly regulate gamma-secretase activity, or themselves act as protease enzymes. Alzheimer's disease (AD) patients with an inherited form of the disease carry mutations in the presenilin proteins (PSEN1; PSEN2) or the amyloid precursor protein (APP). These disease-linked mutations result in increased production of the longer form of amyloid-beta (main component of amyloid deposits found in AD brains). Presenilins are postulated to regulate APP processing through their effects on gamma-secretase, an enzyme that cleaves APP. Also, it is thought that the presenilins are involved in the cleavage of the Notch receptor, such that that they either directly regulate gamma-secretase activity or themselves are protease enzymes. Two alternative transcripts of PSEN2 have been identified.

Synonyms:

AD3L; AD4; CMD1V; PS2; STM2

Note:

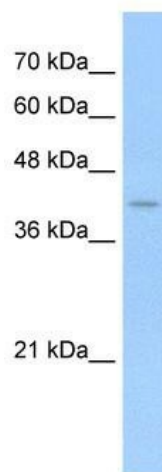
Immunogen Sequence Homology: Dog: 100%; Pig: 100%; Rat: 100%; Horse: 100%; Human: 100%; Mouse: 100%; Bovine: 100%; Rabbit: 100%; Guinea pig: 100%; Zebrafish: 85%

Protein Families:

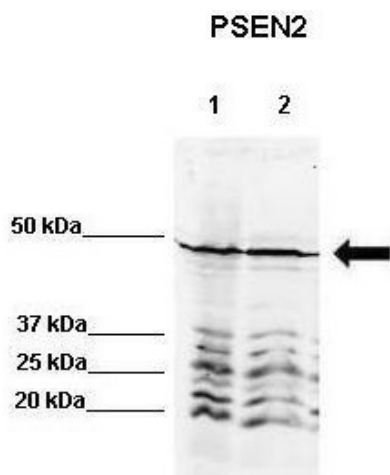
Druggable Genome, Protease, Transmembrane

Protein Pathways:

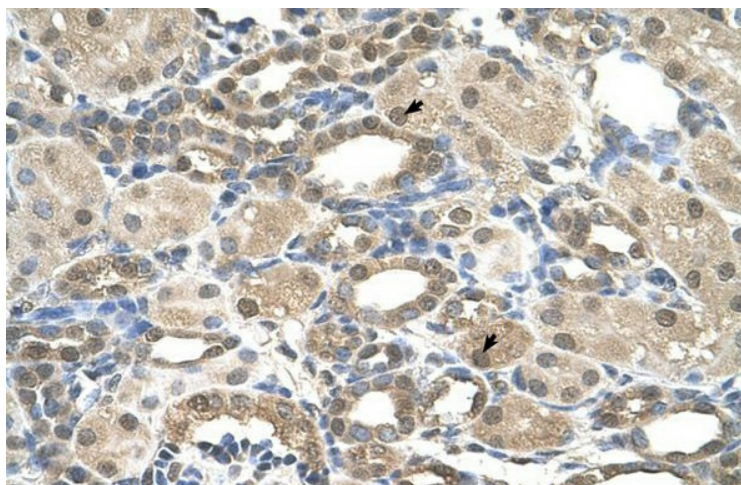
Alzheimer's disease, Notch signaling pathway

Product images:

WB Suggested Anti-PSEN2 Antibody Titration: 0.2-1 ug/ml; Positive Control: Jurkat cell lysate



WB Suggested Anti-PSEN2 Antibody; Positive Control: Lane 1: 80ug rat brain extract Lane 2: 80ug mouse brain extract; Primary Antibody Dilution: 1: 500; Secondary Antibody: IRDye 800 CW goat anti-rabbit from Li-COR Bioscience; Secondary Antibody Dilution: 1



Human kidney