

Product datasheet for **TA335236**

Neuraminidase (NEU1) Rabbit Polyclonal Antibody

Product data:

Product Type:	Primary Antibodies
Applications:	IHC, WB
Recommended Dilution:	WB, IHC
Reactivity:	Human
Host:	Rabbit
Isotype:	IgG
Clonality:	Polyclonal
Immunogen:	The immunogen for anti-NEU1 antibody: synthetic peptide directed towards the middle region of human NEU1. Synthetic peptide located within the following region: VWSKDDGVSWSWTPRNLSLDIGTEVFAPGPGSGIQKQREPRKGRLIVCGHG
Formulation:	Liquid. Purified antibody supplied in 1x PBS buffer with 0.09% (w/v) sodium azide and 2% sucrose. <i>Note that this product is shipped as lyophilized powder to China customers.</i>
Purification:	Protein A purified
Conjugation:	Unconjugated
Storage:	Store at -20°C as received.
Stability:	Stable for 12 months from date of receipt.
Predicted Protein Size:	40 kDa
Gene Name:	neuraminidase 1 (lysosomal sialidase)
Database Link:	NP_000425 Entrez Gene 4758 Human Q99519



[View online »](#)

Background: NEU1 is a lysosomal enzyme, which cleaves terminal sialic acid residues from substrates such as glycoproteins and glycolipids. In the lysosome, this enzyme is part of a heterotrimeric complex together with beta-galactosidase and cathepsin A. Mutations in NEU1 gene can lead to sialidosis. The protein encoded by this gene encodes the lysosomal enzyme, which cleaves terminal sialic acid residues from substrates such as glycoproteins and glycolipids. In the lysosome, this enzyme is part of a heterotrimeric complex together with beta-galactosidase and cathepsin A (the latter also referred to as 'protective protein'). Mutations in this gene can lead to sialidosis.

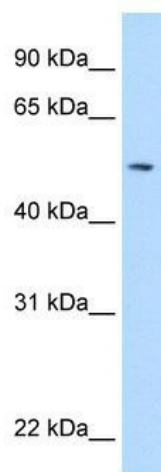
Synonyms: NANH; NEU; SIAL1

Note: Immunogen Sequence Homology: Rat: 100%; Human: 100%; Mouse: 100%; Bovine: 100%; Rabbit: 100%; Horse: 93%; Pig: 86%; Guinea pig: 86%; Dog: 79%

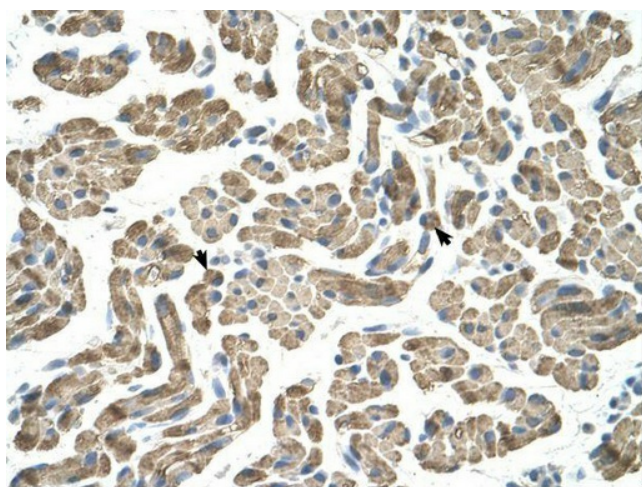
Protein Families: Druggable Genome, Transmembrane

Protein Pathways: Lysosome, Other glycan degradation, Sphingolipid metabolism

Product images:



WB Suggested Anti-NEU1 Antibody Titration: 5.0 ug/ml; Positive Control: Fetal Pancreas cell lysate



Human Muscle