

Product datasheet for **TA335235**

HFE Rabbit Polyclonal Antibody

Product data:

Product Type:	Primary Antibodies
Applications:	IHC, WB
Recommended Dilution:	WB, IHC
Reactivity:	Human
Host:	Rabbit
Isotype:	IgG
Clonality:	Polyclonal
Immunogen:	The immunogen for anti-HFE antibody: synthetic peptide directed towards the C terminal of human HFE. Synthetic peptide located within the following region: FEPKDVLPNGDGTQGWITLAVPPGEEQRYTCQVEHPGLDQPLIVWEPS
Formulation:	Liquid. Purified antibody supplied in 1x PBS buffer with 0.09% (w/v) sodium azide and 2% sucrose. <i>Note that this product is shipped as lyophilized powder to China customers.</i>
Purification:	Affinity Purified
Conjugation:	Unconjugated
Storage:	Store at -20°C as received.
Stability:	Stable for 12 months from date of receipt.
Predicted Protein Size:	28 kDa
Gene Name:	hemochromatosis
Database Link:	NP_620577 Entrez Gene 3077 Human Q30201



[View online »](#)

Background:

HFE is a membrane protein that is similar to MHC class I-type proteins and associates with beta2-microglobulin (beta2M). It is thought that this protein functions to regulate iron absorption by regulating the interaction of the transferrin receptor with transferrin. The iron storage disorder, hereditary haemochromatosis, is a recessive genetic disorder that results from defects in its gene. The protein encoded by this gene is a membrane protein that is similar to MHC class I-type proteins and associates with beta2-microglobulin (beta2M). It is thought that this protein functions to regulate iron absorption by regulating the interaction of the transferrin receptor with transferrin. The iron storage disorder, hereditary haemochromatosis, is a recessive genetic disorder that results from defects in this gene. At least eleven alternatively spliced variants have been described for this gene. Additional variants have been found but their full-length nature has not been determined.

Synonyms:

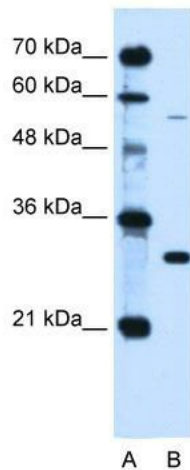
HFE1; HH; HLA-H; MVCD7; TFQTL2

Note:

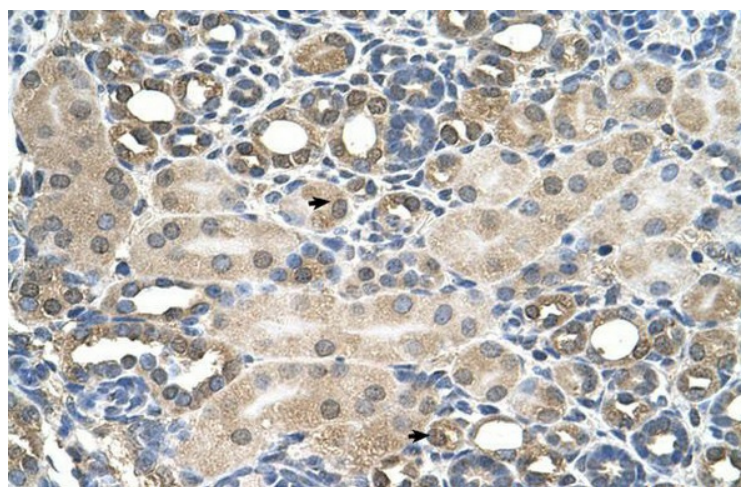
Immunogen Sequence Homology: Dog: 100%; Rat: 100%; Human: 100%; Pig: 92%; Bovine: 92%; Guinea pig: 92%; Zebrafish: 91%; Horse: 86%

Protein Families:

Druggable Genome, Transmembrane

Product images:

WB Suggested Anti-HFE Antibody Titration: 0.2-1 ug/ml; Positive Control: HepG2 cell lysate



Human kidney