

Product datasheet for TA335234

HFE Rabbit Polyclonal Antibody

Product data:

Product Type:	Primary Antibodies
Applications:	WB
Recommended Dilution:	WB
Reactivity:	Human
Host:	Rabbit
Isotype:	IgG
Clonality:	Polyclonal
Immunogen:	The immunogen for anti-HFE antibody: synthetic peptide directed towards the N terminal of human HFE. Synthetic peptide located within the following region: MGASEQDLGLSLFEALGYVDDQLFVFDHESRRRVEPRTPWVSSRISSQMW
Formulation:	Liquid. Purified antibody supplied in 1x PBS buffer with 0.09% (w/v) sodium azide and 2% sucrose. <i>Note that this product is shipped as lyophilized powder to China customers.</i>
Purification:	Affinity Purified
Conjugation:	Unconjugated
Storage:	Store at -20°C as received.
Stability:	Stable for 12 months from date of receipt.
Predicted Protein Size:	40 kDa
Gene Name:	hemochromatosis
Database Link:	NP_000401 Entrez Gene 3077 Human Q30201
Background:	HFE is a membrane protein that is similar to MHC class I-type proteins and associates with beta2-microglobulin (beta2M). It is thought that this protein functions to regulate iron absorption by regulating the interaction of the transferrin receptor with transferrin. The iron storage disorder, hereditary haemochromatosis, is a recessive genetic disorder that results from defects in its gene.
Synonyms:	HFE1; HH; HLA-H; MVCD7; TFQTL2

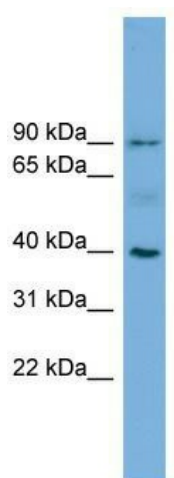


[View online »](#)

Note: Immunogen Sequence Homology: Human: 100%; Horse: 86%; Mouse: 86%; Rat: 79%; Bovine: 79%; Rabbit: 79%

Protein Families: Druggable Genome, Transmembrane

Product images:



WB Suggested Anti-HFE Antibody Titration: 0.2-1 ug/ml; Positive Control: HeLa cell lysate; There is BioGPS gene expression data showing that HFE is expressed in HeLa