

## Product datasheet for **TA335233**

### GPD2 Rabbit Polyclonal Antibody

#### Product data:

Product Type:	Primary Antibodies
Applications:	WB
Recommended Dilution:	WB
Reactivity:	Human
Host:	Rabbit
Isotype:	IgG
Clonality:	Polyclonal
Immunogen:	The immunogen for anti-GPD2 antibody: synthetic peptide directed towards the middle region of human GPD2. Synthetic peptide located within the following region: GQVELNEFLQLMSAIQKGRVSGSRLAILMKTAEEENLDRRVPIPVDRSCGG
Formulation:	Liquid. Purified antibody supplied in 1x PBS buffer with 0.09% (w/v) sodium azide and 2% sucrose. <i>Note that this product is shipped as lyophilized powder to China customers.</i>
Purification:	Affinity Purified
Conjugation:	Unconjugated
Storage:	Store at -20°C as received.
Stability:	Stable for 12 months from date of receipt.
Predicted Protein Size:	81 kDa
Gene Name:	glycerol-3-phosphate dehydrogenase 2
Database Link:	<a href="#">NP_000399</a> <a href="#">Entrez Gene 2820 Human</a> <a href="#">P43304</a>
Background:	The protein encoded by this gene localizes to the inner mitochondrial membrane and catalyzes the conversion of glycerol-3-phosphate to dihydroxyacetone phosphate, using FAD as a cofactor. Along with GDP1, the encoded protein constitutes the glycerol phosphate shuttle, which reoxidizes NADH formed during glycolysis. Two transcript variants encoding the same protein have been found for this gene. [provided by RefSeq, Jan 2010]
Synonyms:	GDH2; GPDM; mGPDH



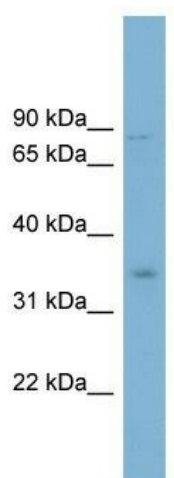
[View online »](#)

**Note:** Immunogen Sequence Homology: Dog: 100%; Pig: 100%; Rat: 100%; Horse: 100%; Human: 100%; Sheep: 100%; Bovine: 100%; Rabbit: 100%; Guinea pig: 100%; Mouse: 93%

**Protein Families:** Druggable Genome, Transmembrane

**Protein Pathways:** Glycerophospholipid metabolism

**Product images:**



WB Suggested Anti-GPD2 Antibody Titration: 0.2-1 ug/ml; Positive Control: ACHN cell lysate