

Product datasheet for **TA335230**

EXT2 Rabbit Polyclonal Antibody

Product data:

Product Type:	Primary Antibodies
Applications:	WB
Recommended Dilution:	WB
Reactivity:	Human
Host:	Rabbit
Isotype:	IgG
Clonality:	Polyclonal
Immunogen:	The immunogen for anti-EXT2 antibody: synthetic peptide directed towards the N terminal of human EXT2. Synthetic peptide located within the following region: NELLMAISDSDYYTDDINRACLFVPSIDVLNQNTRLRIKETAQAMAQLSRW
Formulation:	Liquid. Purified antibody supplied in 1x PBS buffer with 0.09% (w/v) sodium azide and 2% sucrose. <i>Note that this product is shipped as lyophilized powder to China customers.</i>
Purification:	Affinity Purified
Conjugation:	Unconjugated
Storage:	Store at -20°C as received.
Stability:	Stable for 12 months from date of receipt.
Predicted Protein Size:	82 kDa
Gene Name:	exostosin glycosyltransferase 2
Database Link:	NP_000392 Entrez Gene 2132 Human Q93063
Background:	EXT2 is one of two glycosyltransferases involved in the chain elongation step of heparan sulfate biosynthesis. This gene encodes one of two glycosyltransferases involved in the chain elongation step of heparan sulfate biosynthesis. Mutations in this gene cause the type II form of multiple exostoses. Alternatively spliced transcript variants encoding different isoforms have been noted for this gene.
Synonyms:	SOTV



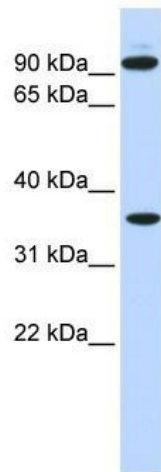
[View online »](#)

Note: Immunogen Sequence Homology: Dog: 100%; Horse: 100%; Human: 100%; Mouse: 100%; Rabbit: 100%; Pig: 93%; Rat: 93%; Bovine: 86%; Guinea pig: 86%; Zebrafish: 79%

Protein Families: Druggable Genome, Transmembrane

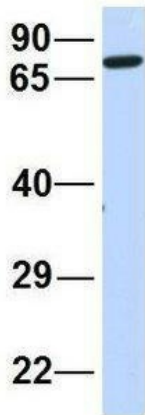
Protein Pathways: Heparan sulfate biosynthesis, Metabolic pathways

Product images:



WB Suggested Anti-EXT2 Antibody Titration: 0.2-1 ug/ml; ELISA Titer: 1: 312500; Positive Control: 721_B cell lysate

EXT2



Rabbit Anti-EXT2
Sample Type: Human HeLa
Antibody Concentration: 1ug/mL

Host: Rabbit; Target Name: EXT2; Sample Tissue: Human HeLa; Antibody Dilution: 1.0 ug/ml; EXT2 is supported by BioGPS gene expression data to be expressed in HeLa