

## Product datasheet for TA335227

### Aldehyde dehydrogenase 10 (ALDH3A2) Rabbit Polyclonal Antibody

#### Product data:

Product Type:	Primary Antibodies
Applications:	WB
Recommended Dilution:	WB
Reactivity:	Human
Host:	Rabbit
Isotype:	IgG
Clonality:	Polyclonal
Immunogen:	The immunogen for anti-ALDH3A2 antibody: synthetic peptide directed towards the middle region of human ALDH3A2. Synthetic peptide located within the following region: DHIFYTGNTAVGKIVMEAAAKHLTPVTLELGGKSPCYIDKDCDLDIVCRR
Formulation:	Liquid. Purified antibody supplied in 1x PBS buffer with 0.09% (w/v) sodium azide and 2% sucrose. <i>Note that this product is shipped as lyophilized powder to China customers.</i>
Purification:	Affinity Purified
Conjugation:	Unconjugated
Storage:	Store at -20°C as received.
Stability:	Stable for 12 months from date of receipt.
Predicted Protein Size:	58 kDa
Gene Name:	aldehyde dehydrogenase 3 family member A2
Database Link:	<a href="#">NP_001026976</a> <a href="#">Entrez Gene 224 Human</a> <a href="#">P51648</a>
Background:	Aldehyde dehydrogenase isozymes are thought to play a major role in the detoxification of aldehydes generated by alcohol metabolism and lipid peroxidation. ALDH3A2 catalyzes the oxidation of long-chain aliphatic aldehydes to fatty acid.
Synonyms:	ALDH10; FALDH; SLS
Note:	Immunogen Sequence Homology: Pig: 100%; Rat: 100%; Horse: 100%; Human: 100%; Mouse: 100%; Bovine: 100%; Rabbit: 100%; Guinea pig: 100%

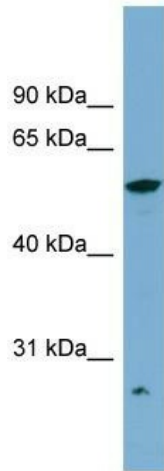


[View online »](#)

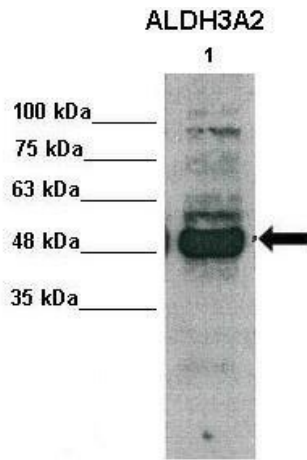
**Protein Families:** Druggable Genome, Transmembrane

**Protein Pathways:** Arginine and proline metabolism, Ascorbate and aldarate metabolism, beta-Alanine metabolism, Butanoate metabolism, Fatty acid metabolism, Glycerolipid metabolism, Glycolysis / Gluconeogenesis, Histidine metabolism, Limonene and pinene degradation, Lysine degradation, Metabolic pathways, Propanoate metabolism, Pyruvate metabolism, Tryptophan metabolism, Valine, leucine and isoleucine degradation

**Product images:**

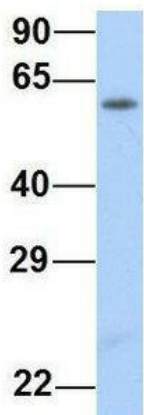


WB Suggested Anti-ALDH3A2 Antibody Titration:  
0.2-1 ug/ml; ELISA Titer: 1: 1562500; Positive Control: NCI-H226 cell lysate



WB Suggested Anti-ALDH3A2 Antibody; Positive Control: Lane 1: 30ug human primary hepatocytes; Primary Antibody Dilution: 1: 1000; Secondary Antibody: Anti-rabbit-HRP; Secondary Antibody Dilution: 1: 5000; Submitted by: Takeshi Saito, USC Keck School of Medi

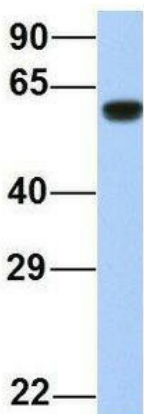
## ALDH3A2



Rabbit Anti-ALDH3A2  
Sample Type: Human Fetal Lung  
Antibody Concentration: 1ug/mL

Host: Rabbit; Target Name: ALDH3A2; Sample  
Tissue: Human Fetal Lung; Antibody Dilution: 1.0  
ug/ml

## ALDH3A2



Rabbit Anti-ALDH3A2  
Sample Type: Human Fetal Liver  
Antibody Concentration: 1ug/mL

Host: Rabbit; Target Name: ALDH3A2; Sample  
Tissue: Human Fetal Liver; Antibody Dilution: 1.0  
ug/ml