

Product datasheet for **TA335226**

Tyrosinase (TYR) Rabbit Polyclonal Antibody

Product data:

Product Type:	Primary Antibodies
Applications:	WB
Recommended Dilution:	WB
Reactivity:	Human
Host:	Rabbit
Isotype:	IgG
Clonality:	Polyclonal
Immunogen:	The immunogen for anti-TYR antibody: synthetic peptide directed towards the middle region of human TYR. Synthetic peptide located within the following region: CLSLTQYESGSMDKAANFSFRNTLEGFASPLTGIADASQSSMHNALHIYM
Formulation:	Liquid. Purified antibody supplied in 1x PBS buffer with 0.09% (w/v) sodium azide and 2% sucrose. <i>Note that this product is shipped as lyophilized powder to China customers.</i>
Purification:	Protein A purified
Conjugation:	Unconjugated
Storage:	Store at -20°C as received.
Stability:	Stable for 12 months from date of receipt.
Predicted Protein Size:	58 kDa
Gene Name:	tyrosinase
Database Link:	NP_000363 Entrez Gene 7299 Human P14679
Background:	TYR is a copper-containing oxidase that functions in the formation of pigments such as melanins and other polyphenolic compounds. It catalyzes the rate-limiting conversions of tyrosine to DOPA, DOPA to DOPA-quinone and possibly 5,6-dihydroxyindole to indole-5,6 quinone.
Synonyms:	ATN; CMM8; OCA1; OCA1A; OCAIA; SHEP3



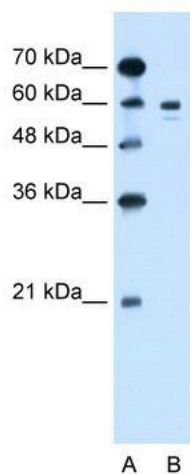
[View online »](#)

Note: Immunogen Sequence Homology: Dog: 100%; Pig: 100%; Rat: 100%; Goat: 100%; Horse: 100%; Human: 100%; Mouse: 100%; Sheep: 100%; Rabbit: 93%; Guinea pig: 92%; Bovine: 86%; Zebrafish: 83%

Protein Families: Transmembrane

Protein Pathways: Melanogenesis, Metabolic pathways, Riboflavin metabolism, Tyrosine metabolism

Product images:



WB Suggested Anti-TYR Antibody Titration: 1.25 ug/ml; Positive Control: Jurkat cell lysate