

## Product datasheet for **TA335225**

### TGFBI Rabbit Polyclonal Antibody

#### Product data:

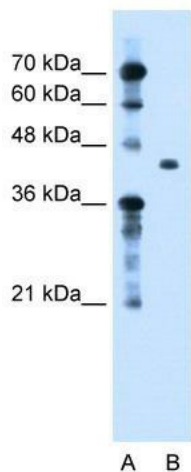
Product Type:	Primary Antibodies
Applications:	IF, WB
Recommended Dilution:	WB, IF
Reactivity:	Human
Host:	Rabbit
Isotype:	IgG
Clonality:	Polyclonal
Immunogen:	The immunogen for anti-TGFBI antibody: synthetic peptide directed towards the C terminal of human TGFBI. Synthetic peptide located within the following region: LKNNVSVNKEPVAEPDIMATNGVHVITNVLQPPANRPQERGDELADSA
Formulation:	Liquid. Purified antibody supplied in 1x PBS buffer with 0.09% (w/v) sodium azide and 2% sucrose. <i>Note that this product is shipped as lyophilized powder to China customers.</i>
Purification:	Protein A purified
Conjugation:	Unconjugated
Storage:	Store at -20°C as received.
Stability:	Stable for 12 months from date of receipt.
Predicted Protein Size:	46 kDa
Gene Name:	transforming growth factor beta induced
Database Link:	<a href="#">NP_000349</a> <a href="#">Entrez Gene 7045 Human</a> <a href="#">Q15582</a>
Background:	TGFBI Binds to type I, II, and IV collagens. This adhesion protein may play an important role in cell-collagen interactions. In cartilage, may be involved in endochondral bone formation.
Synonyms:	BIGH3; CDB1; CDG2; CDGG1; CSD; CSD1; CSD2; CSD3; EBMD; LCD1
Note:	Immunogen Sequence Homology: Pig: 100%; Horse: 100%; Human: 100%; Mouse: 100%; Bovine: 100%; Rabbit: 100%; Guinea pig: 100%; Dog: 93%; Rat: 93%



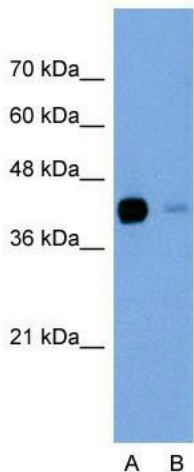
[View online »](#)

Protein Families: Druggable Genome, Secreted Protein, Transmembrane

**Product images:**



WB Suggested Anti-TGFBI Antibody Titration: 1.25 ug/ml; Positive Control: Jurkat cell lysate



**Anti-TGFBI Western Blot & Peptide Block Validation**

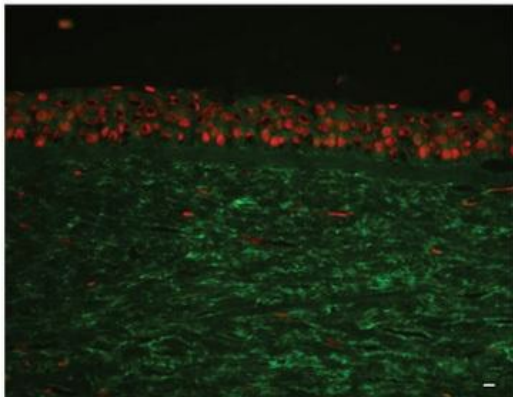
Lysate: Jurkat Cell

Lane A: Primary Antibody  
Lane B: Primary Antibody + Blocking Peptide

Primary Antibody Concentration: 2.5µg/ml  
Peptide Concentration: 2.0µg/ml  
Lysate Quantity: 25µg/lane  
Gel Concentration: 12%

Host: Rabbit; Target Name: TGFBI; Sample Tissue: Jurkat; Lane A: Primary Antibody; Lane B: Primary Antibody + Blocking Peptide; Primary Antibody Concentration: 2.5 ug/mL; Peptide Concentration: 2.0 ug/mL; Lysate Quantity: 25 ug/lane; Gel Concentration: 12

## TGFB1



Species, Tissue/Cell Type: Human Cornea tissue (epithelium and stroma); Primary used and dilution: 1: 400