

Product datasheet for **TA335224**

SRD5A2 Rabbit Polyclonal Antibody

Product data:

Product Type:	Primary Antibodies
Applications:	WB
Recommended Dilution:	WB
Reactivity:	Human, Monkey
Host:	Rabbit
Isotype:	IgG
Clonality:	Polyclonal
Immunogen:	The immunogen for anti-SRD5A2 antibody: synthetic peptide directed towards the N terminal of human SRD5A2. Synthetic peptide located within the following region: KHTESLKPAATRLPARAAWFLQELPSFAVPAGILARQPLSLFGPPGTVLL
Formulation:	Liquid. Purified antibody supplied in 1x PBS buffer with 0.09% (w/v) sodium azide and 2% sucrose. <i>Note that this product is shipped as lyophilized powder to China customers.</i>
Purification:	Affinity Purified
Conjugation:	Unconjugated
Storage:	Store at -20°C as received.
Stability:	Stable for 12 months from date of receipt.
Predicted Protein Size:	28 kDa
Gene Name:	steroid 5 alpha-reductase 2
Database Link:	NP_000339 Entrez Gene 6716 Human P31213
Background:	This gene encodes a microsomal protein expressed at high levels in androgen-sensitive tissues such as the prostate. The encoded protein is active at acidic pH and is sensitive to the 4-azasteroid inhibitor finasteride. Deficiencies in this gene can result in male pseudohermaphroditism, specifically pseudovaginal perineoscrotal hypospadias (PPSH).
Synonyms:	MGC138457



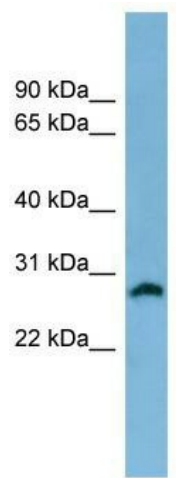
[View online »](#)

Note: Immunogen Sequence Homology: Dog: 100%; Horse: 100%; Human: 100%; Bovine: 100%; Pig: 93%; Rat: 93%; Rabbit: 86%; Mouse: 77%

Protein Families: Druggable Genome, Transmembrane

Protein Pathways: Androgen and estrogen metabolism, Prostate cancer

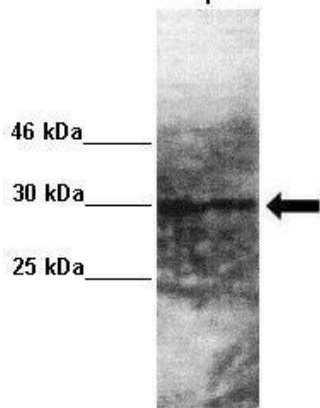
Product images:



WB Suggested Anti-SRD5A2 Antibody Titration: 0.2-1 ug/ml; ELISA Titer: 1: 312500; Positive Control: HepG2 cell lysate

SRD5A2

1



Lanes: Lane 1: 50ug monkey brain extract; Primary Antibody Dilution: 1: 1000; Secondary Antibody: Goat anti rabbit-HRP; Secondary Antibody Dilution: 1: 10, 000; Gene Name: SRD5A2; Submitted by: Jonathan Bertin, Endoceutics Inc.