

## Product datasheet for **TA335223**

### SRD5A2 Rabbit Polyclonal Antibody

#### Product data:

|                         |  |
|-------------------------|--|
| Product Type:           | Primary Antibodies   |
| Applications:           | IHC, WB  |
| Recommended Dilution:   | IHC, WB  |
| Reactivity:             | Human, Monkey  |
| Host:                   | Rabbit   |
| Isotype:                | IgG  |
| Clonality:              | Polyclonal   |
| Immunogen:              | The immunogen for anti-SRD5A2 antibody: synthetic peptide directed towards the N terminal of human SRD5A2. Synthetic peptide located within the following region:<br>MQVQCQSPVLAGSATLVALGALALYVAKPSGYGKHTESLKPATRLPAR  |
| Formulation:            | Liquid. Purified antibody supplied in 1x PBS buffer with 0.09% (w/v) sodium azide and 2% sucrose.<br><i>Note that this product is shipped as lyophilized powder to China customers.</i>  |
| Purification:           | Affinity Purified  |
| Conjugation:            | Unconjugated   |
| Storage:                | Store at -20°C as received.  |
| Stability:              | Stable for 12 months from date of receipt.   |
| Predicted Protein Size: | 28 kDa   |
| Gene Name:              | steroid 5 alpha-reductase 2  |
| Database Link:          | <a href="#">NP_000339</a><br><a href="#">Entrez Gene 6716 Human P31213</a>   |
| Background:             | This gene encodes a microsomal protein expressed at high levels in androgen-sensitive tissues such as the prostate. The encoded protein is active at acidic pH and is sensitive to the 4-azasteroid inhibitor finasteride. Deficiencies in this gene can result in male pseudohermaphroditism, specifically pseudovaginal perineoscrotal hypospadias (PPSH).<br>[provided by RefSeq, Jul 2008] |
| Synonyms:               | MGC138457  |



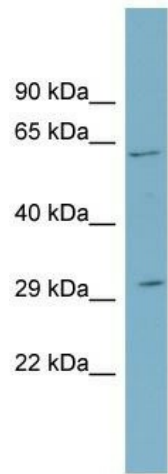
[View online »](#)

**Note:** Immunogen Sequence Homology: Human: 100%; Rabbit: 91%; Pig: 86%

**Protein Families:** Druggable Genome, Transmembrane

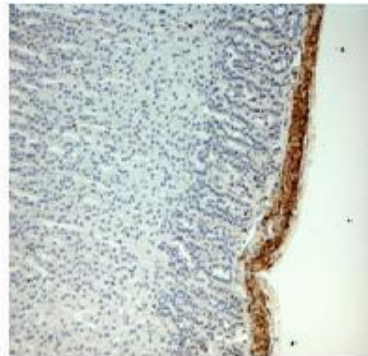
**Protein Pathways:** Androgen and estrogen metabolism, Prostate cancer

**Product images:**



**SRD5A2**

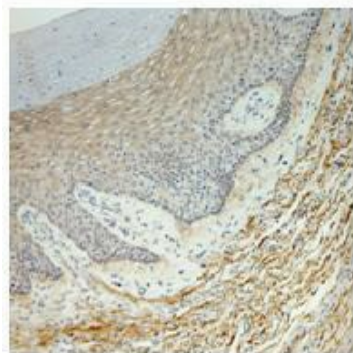
WB Suggested Anti-SRD5A2 Antibody Titration: 0.2-1 ug/ml; Positive Control: THP-1 cell lysate



**Brown: SRD5A2**  
**Blue: Nucleus**

Sample Type: Monkey adrenal gland; Primary Antibody Dilution: 1: 25; Secondary Antibody: Anti-rabbit-HRP; Secondary Antibody Dilution: 1: 1000; Color/Signal Descriptions: Brown: SRD5A2 Blue: Nucleus; Gene Name: SRD5A2; Submitted by: Jonathan Bertin, Endoc

## SRD5A2



**Brown: SRD5A2**  
**Blue: Nucleus**

Sample Type: Monkey vagina; Primary Antibody Dilution: 1: 25; Secondary Antibody: Anti-rabbit-HRP; Secondary Antibody Dilution: 1: 1000; Color/Signal Descriptions: Brown: SRD5A2 Blue: Nucleus; Gene Name: SRD5A2; Submitted by: Jonathan Bertin, EndoCeutics