

Product datasheet for **TA335222**

delta Sarcoglycan (SGCD) Rabbit Polyclonal Antibody

Product data:

Product Type:	Primary Antibodies
Applications:	WB
Recommended Dilution:	WB
Reactivity:	Mouse
Host:	Rabbit
Isotype:	IgG
Clonality:	Polyclonal
Immunogen:	The immunogen for anti-Sgcd antibody: synthetic peptide corresponding to a region of Mouse. Synthetic peptide located within the following region: FVLLLMILILVNLAMTIWILKVMNFTIDGMGNLRITEKGLKLEGDSEFLQ
Formulation:	Liquid. Purified antibody supplied in 1x PBS buffer with 0.09% (w/v) sodium azide and 2% sucrose. <i>Note that this product is shipped as lyophilized powder to China customers.</i>
Purification:	Affinity Purified
Conjugation:	Unconjugated
Storage:	Store at -20°C as received.
Stability:	Stable for 12 months from date of receipt.
Predicted Protein Size:	32 kDa
Gene Name:	sarcoglycan delta
Database Link:	NP_000328 Entrez Gene 24052 Mouse Q92629
Background:	Sgcd is a component of the sarcoglycan complex, a subcomplex of the dystrophin-glycoprotein complex which forms a link between the F-actin cytoskeleton and the extracellular matrix.
Synonyms:	35DAG; CMD1L; DAGD; SG-delta; SGCDP; SGD
Note:	Immunogen Sequence Homology: Pig: 100%; Rat: 100%; Human: 100%; Mouse: 100%; Bovine: 100%; Rabbit: 100%; Guinea pig: 100%; Dog: 93%; Zebrafish: 93%; Horse: 86%

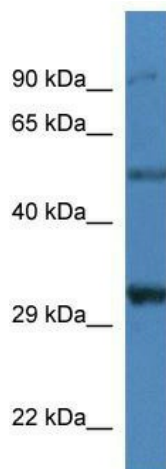


[View online »](#)

Protein Families: Transmembrane

Protein Pathways: Arrhythmogenic right ventricular cardiomyopathy (ARVC), Dilated cardiomyopathy, Hypertrophic cardiomyopathy (HCM), Viral myocarditis

Product images:



WB Suggested Anti-Sgcd Antibody Titration:
1.0ug/mL; Positive Control: Mouse Kidney